

## 7. TRADE AND SERVICES

Data reported in this edition to the *Abstract* from the 1997 Economic Censuses are not comparable to data from earlier Economic Censuses due to changes in the industry classification system. The 1997 Economic Censuses detail industry data in accordance with the new North American Industry Classification System (NAICS). For details regarding the differences between the NAICS and the Standard Industrial Classification (SIC), see <<http://www.census.gov/epcd/www/naicsusr.html#BREAKS>>. "Bridge tables," published in the 1997 Census, also provide comparability between current industry-specific data and data collected under the prior system.

### TABLE OF CONTENTS

- TABLE 7.1 — MONTHLY RETAIL SALES, TENNESSEE, 1978—1996 [In millions of dollars]
- TABLE 7.2 — RETAIL TRADE DATA, BY TYPE OF ESTABLISHMENT, TENNESSEE, 1997 [Dollar amounts in thousands]
- FIGURE 7.1 — Retail Sales by Type of Business, Establishments with Payroll, Tennessee, 1997**
- TABLE 7.3 — WHOLESALE TRADE DATA, BY TYPE OF OPERATION, TENNESSEE, 1997 [Dollar amounts in thousands]
- TABLE 7.4 — SERVICE INDUSTRY ESTABLISHMENTS, RECEIPTS, PAYROLL AND EMPLOYMENT, BY TYPE OF ESTABLISHMENT, TENNESSEE 1992 AND 1997 [Dollar amounts in thousands]
- TABLE 7.5 — SERVICE-TYPE INDUSTRY ESTABLISHMENTS AS CLASSIFIED BY THE 1997 NAICS<sup>1</sup>, RECEIPTS, PAYROLL AND EMPLOYMENT, BY TYPE OF ESTABLISHMENT, TENNESSEE 1997 [Dollar amounts in thousands]
- TABLE 7.6 — NUMBER AND LIABILITIES OF BUSINESS FAILURES, TENNESSEE, 1955—1997, SELECTED YEARS [Liabilities in thousands of dollars]
- TABLE 7.7 — RETAIL TRADE DATA, BY TYPE OF ESTABLISHMENT, METROPOLITAN STATISTICAL AREAS, 1997 [Dollar amounts in thousands]
- TABLE 7.8 — WHOLESALE TRADE DATA, BY TYPE OF BUSINESS ESTABLISHMENT, METROPOLITAN STATISTICAL AREAS, 1997 [Dollar amounts in thousands]
- TABLE 7.9 — SERVICE-TYPE INDUSTRY DATA, BY TYPE OF BUSINESS ESTABLISHMENT, METROPOLITAN STATISTICAL AREAS, 1997 [Dollar amounts in thousands]
- TABLE 7.10 — RETAIL SALES OF ESTABLISHMENTS, BY TYPE OF ESTABLISHMENT, COUNTIES, 2001
- TABLE 7.11 — RETAIL TRADE EMPLOYEES AND PAYROLL, AND NUMBER OF ESTABLISHMENTS BY EMPLOYMENT-SIZE CLASS, COUNTIES, 2000
- TABLE 7.12 — WHOLESALE TRADE EMPLOYEES AND PAYROLL, AND NUMBER OF ESTABLISHMENTS BY EMPLOYMENT-SIZE CLASS, COUNTIES, 2000
- TABLE 7.13 — ACCOMMODATION AND FOOD SERVICES EMPLOYEES AND PAYROLL, AND NUMBER OF ESTABLISHMENTS BY EMPLOYMENT-SIZE CLASS, COUNTIES, 2000
- TABLE 7.14 — ADMINISTRATIVE AND SUPPORT AND WASTE MANAGEMENT AND REMEDIATION SERVICES EMPLOYEES AND PAYROLL, AND NUMBER OF ESTABLISHMENTS BY EMPLOYMENT-SIZE CLASS, COUNTIES, 2000
- TABLE 7.15 — ARTS, ENTERTAINMENT, AND RECREATION EMPLOYEES AND PAYROLL, AND NUMBER OF ESTABLISHMENTS BY EMPLOYMENT-SIZE CLASS, COUNTIES, 2000

---

**TABLE OF CONTENTS, CONTINUED**

- TABLE 7.16 — EDUCATIONAL SERVICES EMPLOYEES AND PAYROLL, AND NUMBER OF ESTABLISHMENTS BY EMPLOYMENT-SIZE CLASS, COUNTIES, 2000
- TABLE 7.17 — HEALTH CARE AND SOCIAL ASSISTANCE EMPLOYEES AND PAYROLL, AND NUMBER OF ESTABLISHMENTS BY EMPLOYMENT-SIZE CLASS, COUNTIES, 2000 (Continued)
- TABLE 7.18 — INFORMATION EMPLOYEES AND PAYROLL, AND NUMBER OF ESTABLISHMENTS BY EMPLOYMENT-SIZE CLASS, COUNTIES, 2000
- TABLE 7.19 — MANAGEMENT OF COMPANIES AND ENTERPRISES SECTOR EMPLOYEES AND PAYROLL, AND NUMBER OF ESTABLISHMENTS BY EMPLOYMENT-SIZE CLASS, COUNTIES, 2000
- TABLE 7.20 — PROFESSIONAL, SCIENTIFIC, AND TECHNICAL SERVICES EMPLOYEES AND PAYROLL, AND NUMBER OF ESTABLISHMENTS BY EMPLOYMENT-SIZE CLASS, COUNTIES, 2000
- TABLE 7.21 — OTHER SERVICES (EXCEPT PUBLIC ADMINISTRATION) EMPLOYEES AND PAYROLL, AND NUMBER OF ESTABLISHMENTS BY EMPLOYMENT-SIZE CLASS, COUNTIES, 2000
- TABLE 7.22 — RETAIL TRADE DATA, SOUTHEASTERN STATES, 1997 [Dollar amounts in thousands]
- TABLE 7.23 — WHOLESALE TRADE DATA, SOUTHEASTERN STATES, 1997 [Dollar amounts in millions]
- TABLE 7.24 — ACCOMMODATION AND FOOD SERVICE INDUSTRIES DATA, SOUTHEASTERN STATES, 1997 [Dollar amounts in thousands]
- TABLE 7.25 — ADMINISTRATIVE AND SUPPORT AND WASTE MANAGEMENT AND REMEDIATION SERVICE INDUSTRIES DATA, SOUTHEASTERN STATES, 1997 [Dollar amounts in thousands]
- TABLE 7.26 — ARTS, ENTERTAINMENT, AND RECREATION INDUSTRIES DATA, SOUTHEASTERN STATES, 1997 [Dollar amounts in thousands]
- TABLE 7.27 — EDUCATIONAL SERVICE INDUSTRIES DATA, SOUTHEASTERN STATES, 1997 [Dollar amounts in thousands]
- TABLE 7.28 — HEALTH CARE AND SOCIAL ASSISTANCE INDUSTRIES DATA, SOUTHEASTERN STATES, 1997 [Dollar amounts in thousands]
- TABLE 7.29 — INFORMATION INDUSTRIES DATA, SOUTHEASTERN STATES, 1997 [Dollar amounts in thousands]
- TABLE 7.30 — MANAGEMENT OF COMPANIES AND ENTERPRISES DATA, SOUTHEASTERN STATES, 1997 [Dollar amounts in thousands]
- TABLE 7.31 — PROFESSIONAL, SCIENTIFIC AND TECHNICAL SERVICE INDUSTRIES DATA, SOUTHEASTERN STATES, 1997 [Dollar amounts in thousands]
- TABLE 7.32 — OTHER SERVICE INDUSTRIES DATA (EXCEPT PUBLIC ADMINISTRATION) SOUTHEASTERN STATES, 1997 [Dollar amounts in thousands]
- TABLE 7.33 — NEW BUSINESS INCORPORATIONS, SOUTHEASTERN STATES AND UNITED STATES, 1990—1997
- TABLE 7.34 — BUSINESS FAILURES, SOUTHEASTERN STATES AND UNITED STATES, 1990—1997

TABLE 7.1 — MONTHLY RETAIL SALES, TENNESSEE, 1978—1996 [In millions of dollars]

Year	Jan.	Feb.	March	April	May	June	July	Aug.	Sept.	Oct.	Nov.	Dec.	Annual
1996	3,566	3,775	4,249	4,283	4,606	4,408	4,296	4,446	4,005	4,222	4,408	5,074	51,338
1995	3,293	3,296	3,939	3,982	4,194	4,222	4,154	4,364	4,045	4,081	4,293	4,987	48,850
1994	2,935	3,187	3,765	3,747	3,840	3,869	3,742	3,946	3,767	3,951	4,063	4,737	45,549
1993	2,850	2,912	3,213	3,376	3,597	3,471	3,630	3,578	3,409	3,569	3,733	4,336	41,674
1992	2,621	2,730	2,922	2,983	3,153	3,081	3,197	3,242	3,131	3,384	3,410	4,010	37,864
1991	2,262	2,330	2,730	2,678	2,972	2,809	2,835	2,973	2,658	2,856	2,900	3,329	33,332
1990	2,349	2,325	2,660	2,570	2,792	2,721	2,713	2,881	2,605	2,702	2,785	3,128	32,321
1989	2,122	2,071	2,500	2,471	2,642	2,555	2,575	2,767	2,541	2,512	2,631	3,048	30,435
1988	1,842	2,000	2,315	2,320	2,408	2,383	2,383	2,544	2,303	2,402	2,467	2,976	28,343
1987	1,755	1,795	2,105	2,243	2,362	2,309	2,322	2,428	2,177	2,260	2,238	2,686	26,680
1986	1,693	1,556	1,925	1,983	2,106	1,992	2,061	2,040	1,982	2,056	1,982	2,495	23,871
1985	1,478	1,426	1,735	1,773	1,853	1,800	1,869	1,938	1,841	1,925	1,920	2,343	21,901
1984	1,427	1,390	1,642	1,612	1,691	1,707	1,647	1,690	1,646	1,730	1,794	2,079	20,055
1983	1,207	1,181	1,458	1,440	1,462	1,539	1,590	1,564	1,550	1,586	1,602	1,918	18,097
1982	1,134	1,096	1,289	1,316	1,354	1,354	1,404	1,380	1,327	1,376	1,406	1,716	16,152
1981	1,201	1,150	1,368	1,383	1,390	1,396	1,393	1,455	1,368	1,396	1,374	1,736	16,610
1980	1,091	1,083	1,223	1,206	1,281	1,266	1,289	1,314	1,284	1,362	1,382	1,688	15,469
1979	966	953	1,266	1,221	1,252	1,247	1,218	1,295	1,215	1,219	1,300	1,533	14,685
1978	813	869	1,098	1,124	1,129	1,190	1,151	1,180	1,144	1,159	1,172	1,426	13,455

Note: Not adjusted for seasonal variations.

Source: U.S. Department of Commerce, Bureau of the Census, Current Business Reports, Annual Benchmark Report for Retail Trade: January 1987 through December 1996; and Current Business Reports, Combined Annual and Revised Monthly Retail Trade: January 1986 through December 1995, and earlier editions; and Current Business Reports, Revised Monthly Retail Sales and Inventories: January 1982 through December 1991, and earlier editions.

TABLE 7.2 — RETAIL TRADE DATA, BY TYPE OF ESTABLISHMENT, TENNESSEE, 1997 [Dollar amounts in thousands]

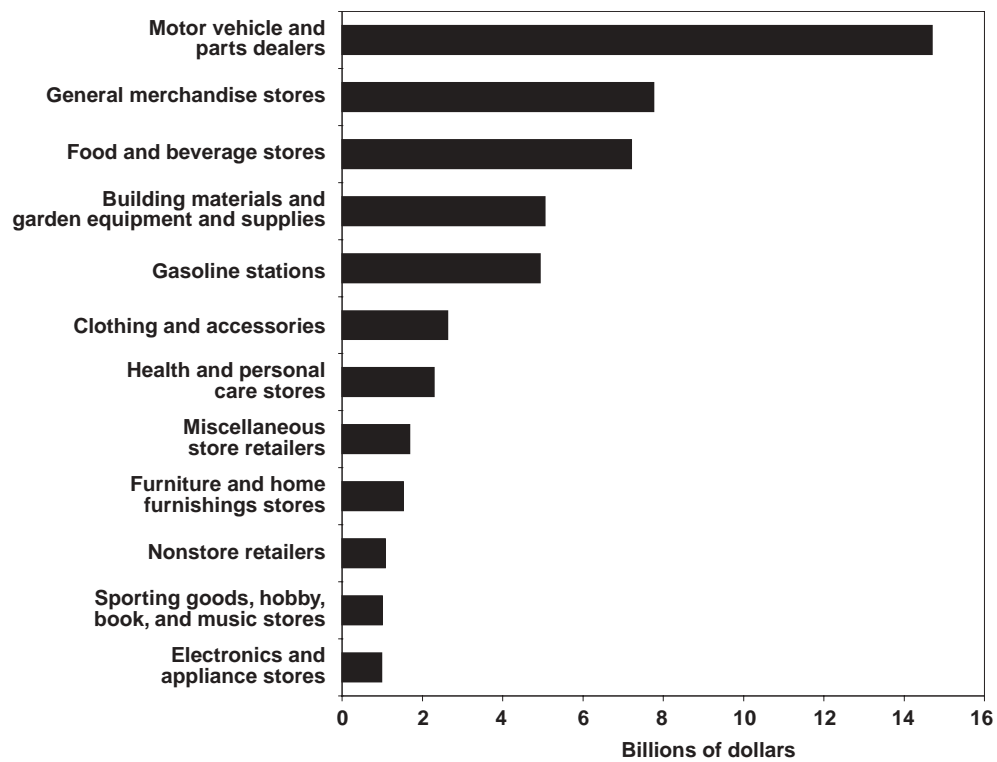
Type of establishment	Number of establishments	Sales	Annual payroll	Number of paid employees <sup>1</sup>
TOTAL	24,808	\$50,813,221	\$4,810,252	304,452
Building materials and garden equipment and supplies dealers	2,044	5,046,986	555,746	25,233
Clothing and clothing accessories stores	3,283	2,626,592	308,714	27,531
Electronics and appliance stores	842	985,950	116,433	5,834
Food and beverage stores	2,882	7,202,767	673,859	58,824
Furniture and home furnishings stores	1,447	1,524,458	210,451	11,053
Gasoline stations	3,463	4,932,156	298,424	22,691
General merchandise stores	1,031	7,762,543	750,895	64,223
Health and personal care stores	1,764	2,288,097	307,828	18,546
Motor vehicle & parts dealers	3,077	14,692,340	1,107,379	38,615
Sporting goods, hobby, book, and music stores	1,321	1,000,538	117,192	9,477
Miscellaneous store retailers	2,799	1,678,314	212,935	14,865
Nonstore retailers	855	1,072,480	150,396	7,560

Note: 1997 data are based on the North American Industry Classification System (NAICS), unlike earlier censuses, which were published according to the Standard Industrial Classification (SIC) system. As a result, 1997 data may not be directly comparable to previous years. All dollar values are expressed as current dollars; i.e., 1997 dollars. Includes only establishments with payroll.

1. Survey taken during week of March 12.

Source: U.S. Census Bureau, 1997 Economic Census, Retail Trade: Geographic Area Series, Tennessee.

**FIGURE 7.1**  
**Retail Sales by Type of Business,**  
**Establishments with Payroll, Tennessee, 1997**



Source: U.S. Census Bureau, 1997 Economic Census, Retail Trade: Geographic Area Series, Tennessee.

TABLE 7.3 — WHOLESALE TRADE DATA, BY TYPE OF OPERATION, TENNESSEE, 1997 [Dollar amounts in thousands]

Kind of business	Number of establishments	Sales	Annual payroll	Number of paid employees <sup>1</sup>	Operating expenses	End-of-1996 inventories	End-of-1997 inventories
TOTAL	8,234	\$82,626,370	\$3,975,440	\$120,228	\$8,044,570	\$6,442,077	\$6,729,725
Merchant wholesalers	6,734	47,023,504	3,046,787	95,077	6,043,403	5,402,387	5,699,520
Wholesaler distributors and jobbers	6,448	39,725,637	2,886,814	90,944	5,705,896	4,243,097	4,688,202
Importers	123	2,067,513	67,276	1,978	133,484	68,540	73,379
Exporters	67	2,610,669	22,903	688	52,960	417,058	333,011
Own brand importer-marketers	36	565,756	23,739	717	74,651	84,326	84,941
Terminal grain elevators	2	(D)	(D)	(a)	(D)	(D)	(D)
Country grain elevators	25	(D)	(D)	(c)	(D)	(D)	(D)
Assemblers of farm products, except country grain elevators	33	1,834,904	40,616	584	64,263	565,288	497,709
Manufacturers' sales branches and sales offices	708	26,634,008	754,196	18,406	1,680,448	1,031,737	1,024,239
Sales branches (with stock)	454	11,252,662	477,078	13,572	1,119,067	1,031,737	1,024,239
Sales offices (without stock)	254	15,381,346	277,118	4,834	561,381	0	0
Agents, brokers, and commission merchants	792	8,968,858	174,457	6,745	320,719	7,953	5,966
Auction companies	48	2,145,579	19,091	1,771	49,694	439	371
Brokers	148	3,492,191	51,705	2,596	93,741	3,601	917
Commission merchants	94	347,393	9,530	345	18,489	1,047	886
Import agents	5	(D)	(D)	(b)	(D)	(D)	(D)
Export agents	11	(D)	(D)	(c)	(D)	(D)	(D)
Manufacturers' agents	486	2,901,945	91,696	1,837	154,225	2,857	3,786

Note: 1997 data are based on the North American Industry Classification System (NAICS), unlike earlier censuses, which were published according to the Standard Industrial Classification (SIC) system. As a result, 1997 data may not be directly comparable to previous years. All dollar values are expressed as current dollars; i.e., 1997 dollars.

(D) Withheld to avoid disclosing operations of individual companies.

a. Range is 0 to 19 employees.

b. Range is 20 to 99 employees.

c. Range is 100 to 249 employees.

1. Survey taken during week of March 12.

Source: U.S. Census Bureau, 1997 Economic Census, Wholesale Trade: Geographic Area Series, Tennessee.

TABLE 7.4 — SERVICE INDUSTRY ESTABLISHMENTS, RECEIPTS, PAYROLL AND EMPLOYMENT, BY TYPE OF ESTABLISHMENT, TENNESSEE 1992 AND 1997 [Dollar amounts in thousands]

Kind of business (1987 SIC)	Establishments			Receipts			Paid employees <sup>1</sup>			Annual payroll		
	1997	1992	Percent change	1997	1992	Percent change	1997	1992	Percent change	1997	1992	Percent change
TOTAL	36,914	31,953	15.5	\$31,225,566	\$20,409,744	53.0	487,855	362,436	34.6	\$12,005,081	\$7,581,117	57.0
Hotels, motels, and other lodging places	1,339	1,078	24.2	1,714,948	1,076,368	59.3	31,593	26,392	19.7	422,405	273,553	54.4
Personal services	3,777	3,649	3.5	(D)	881,831	n.a.	(f)	26,053	n.a.	(D)	314,579	n.a.
Business services	6,474	4,997	29.6	6,469,167	3,656,541	76.9	152,025	103,017	47.6	2,807,595	1,481,239	88.1
Automotive repair, services, and parking	3,662	3,244	12.9	1,872,821	1,178,859	58.9	19,588	15,035	30.3	397,833	238,456	66.7
Miscellaneous repair services	1,198	1,287	-6.9	(D)	514,008	n.a.	(D)	7,857	n.a.	(D)	161,725	n.a.
Motion pictures	856	766	11.7	(D)	464,001	n.a.	(D)	5,442	n.a.	(D)	65,578	n.a.
Amusement and recreation services	1,757	1,502	17.0	(D)	964,311	n.a.	(e)	15,046	n.a.	(D)	268,785	n.a.
Health services	8,764	8,226	6.5	10,424,317	6,749,159	54.5	141,581	100,303	41.2	4,511,139	2,870,982	57.1
Legal services	2,457	2,272	8.1	1,257,337	1,010,309	24.5	11,873	10,619	11.8	426,321	326,319	30.7
Selected educational services	281	202	39.1	(D)	72,608	n.a.	(c)	1,619	n.a.	(D)	29,315	n.a.
Social services	1,439	1,076	33.7	330,223	199,585	65.5	13,308	8,691	53.1	141,250	81,478	41.8
Museums, art galleries, and botanical and zoological gardens	21	13	61.5	(D)	5,646	n.a.	(a)	73	n.a.	(D)	1,008	n.a.
Membership organizations	8	n.a.	n.a.	(D)	n.a.	n.a.	(b)	n.a.	n.a.	(D)	n.a.	n.a.
Engineering, accounting, research, management, and related services	4,510	3,490	29.2	(D)	3,539,712	n.a.	(g)	41,198	n.a.	(D)	1,429,638	n.a.
Services, not elsewhere classified	n.a.	151	n.a.	n.a.	96,806	n.a.	n.a.	1,091	n.a.	n.a.	38,462	n.a.

Note: Data presented in this table are based on the 1987 Standard Industrial Classification (SIC) system. Most data from the 1997 Economic Census were published on the basis of the North American Industry Classification System (NAICS). Under the NAICS, the sector title 'Services' no longer exists. Includes only those establishments with payroll subject to Federal Income Tax. Data are in current dollars and have not been adjusted for inflation.

(D) Withheld to avoid disclosing operations of individual companies.

n.a. not available.

- a. Range is 100 to 249 employees. e. Range is 10,000 to 24,999 employees.  
 b. Range is 250 to 499 employees. f. Range is 25,000 to 49,999 employees.  
 c. Range is 1,000 to 2,499 employees. g. Range is 50,000 to 99,999 employees.

1. Survey taken during week of March 12.

Source: U.S. Census Bureau, 1997 Economic Census, Comparative Statistics for Tennessee, 1987 SIC Basis <<http://www.census.gov/epcd/ec97sic/E97STN.HTM>>.

TABLE 7.5 — SERVICE-TYPE INDUSTRY ESTABLISHMENTS AS CLASSIFIED BY THE 1997 NAICS<sup>1</sup>, RECEIPTS, PAYROLL AND EMPLOYMENT, BY TYPE OF ESTABLISHMENT, TENNESSEE 1997 [Dollar amounts in thousands]

Kind of business (1997 NAICS <sup>1</sup> )	Number of establishments	Revenue/receipts/Sales	Annual payroll	Number of paid employees <sup>2</sup>
Accommodation and foodservices	9,604	\$6,790,159	\$1,880,279	197,881
Administrative and support and waste management and remediation services	5,049	5,360,302	2,560,283	145,824
Arts, entertainment, and recreation	1,755	1,228,665	394,346	18,263
Educational services	503	145,930	54,785	3,079
Health care and social assistance	10,113	10,753,015	4,659,937	155,667
Information	2,101	7,949,711	1,511,870	45,015
Management of companies and enterprises	1,105	1,098,787	3,455,391	76,136
Professional, scientific, and technical services	8,812	6,911,779	2,686,615	72,225
Other services (except public administration)	7,767	2,996,672	918,666	49,204

Note: 1997 data are based on the North American Industry Classification System (NAICS), unlike earlier censuses, which were published according to the Standard Industrial Classification (SIC) system. The Service Sector Industry as classified by the 1987 SIC system no longer exists.

1. The Accommodation and Foodservices sector is comprised of hotels and other lodging places previously classified "Services" under the 1987 SIC system. Eating and drinking places and mobile foodservices previously classified "Retail Trade" are also included.

The Administrative and Support and Waste Management and Remediation Services sector primarily includes administrative and business support establishments previously classified "Services" under the 1987 SIC system, and waste management establishments previously classified "Transportation, Communications, and Utilities." Travel agencies and other arrangers of passenger transportation, previously classified "Transportation, Communications, and Utilities," are also included. Note that landscaping services, although part of this sector, are not in scope of the 1997 Economic Census.

The Arts, Entertainment, and Recreation sector primarily includes establishments previously classified "Services" under the 1987 SIC system. Authors, composers and writers, are included in this sector. Marinas, previously classified "Transportation, Communications, and Utilities," and dinner theaters, previously classified "Retail Trade," are also included.

The Educational Services sector primarily includes establishments previously classified "Services" under the 1987 SIC system. This sector also includes beauty and barber schools, sports and recreational instruction, and educational testing and consulting. Note that elementary and secondary schools and colleges and universities, although part of this sector, are not in scope of the 1997 Economic Census.

The Health Care and Social Assistance sector primarily includes establishments previously classified "Services" under the 1987 SIC system. Ambulance services, previously classified "Transportation, Communications, and Utilities," are also included in this sector. Note that government owned and operated hospitals are in scope of the 1997 Economic Census.

The Information Sector includes various types of information-related establishments previously classified "Services" (e.g. software publishing, motion picture production, data processing, on-line information services, and libraries) under the 1987 SIC system. This new sector also included publishing establishments previously classified "Manufacturing," and telecommunications and broadcasting establishments previously classified "Transportation, Communications, and Utilities."



---

TABLE 7.5 — SERVICE-TYPE INDUSTRY ESTABLISHMENTS AS CLASSIFIED BY THE 1997 NAICS<sup>1</sup>, RECEIPTS, PAYROLL AND EMPLOYMENT, BY TYPE OF ESTABLISHMENT, TENNESSEE 1997 [Dollar amounts in thousands] (Continued)

---

The Management of Companies and Enterprises sector includes holding companies previously classified "Finance, Insurance, and Real Estate" under the 1987 SIC system and corporate, subsidiary, and regional managing offices of companies and enterprises.

The Professional, Scientific, and Technical Services sector primarily includes professional and other highly specialized technical service establishments previously classified "Services" under the 1987 SIC system. This new sector also includes establishments previously classified "Finance, Insurance, and Real Estate" (title abstract offices) and advertising specialty distributors, previously classified "Wholesale Trade." Note that veterinary services, although part of this sector, are not in the scope of the 1997 Economic Census.

2. Survey taken during week of March 12.

Source: U.S. Census Bureau, 1997 Economic Census.

TABLE 7.6 — NUMBER AND LIABILITIES OF BUSINESS FAILURES, TENNESSEE, 1955—1997, SELECTED YEARS [Liabilities in thousands of dollars]

Year	Number of failures <sup>1</sup>	Current liabilities <sup>2</sup>
1997 <sup>p</sup>	1,717	n.a.
1996	1,331	n.a.
1995	989	n.a.
1994	956	n.a.
1993	1,210	109,930
1992	1,660	304,050
1991	1,995	446,794
1990	1,475	861,177
1989	1,164	362,486
1988	1,169	415,668
1987	1,134	324,557
1986	1,180	321,114
1985	1,217	442,025
1984	1,326	1,044,724
1983	989	252,874
1982	814	226,795
1981	603	129,000
1980	449	115,000
1979	234	47,123
1978	155	28,369
1977	150	65,936
1976	214	52,281
1975	190	81,625
1974	147	25,025
1973	118	13,499
1972	130	13,990
1971	119	18,283
1970	170	48,090
1969	123	23,024
1968	115	9,486
1967	145	13,513
1966	134	13,802
1965	188	19,938
1960	172	10,850
1955	129	8,717

Note: Data are for commercial and industrial failures only through 1983, excluding failures of banks, railroads, real estate, insurance, holding and financial companies, steamship lines, travel agencies, etc. Beginning in 1984, data are based on expanded coverage and new methodology and are, therefore, not comparable with earlier years.

p preliminary.

n.a. not available.

1. Includes concerns discontinuing following assignment, voluntary or involuntary petition in bankruptcy, attachment, execution, foreclosure, etc.; voluntary withdrawals from business with known loss to creditors; also enterprises involved in court action, such as receivership and reorganization or arrangement which may or may not lead to discontinuance; and businesses making voluntary compromise with creditors out of court.
2. Liabilities exclude long-term publicly held obligations; offsetting assets are not taken into account.

Source: Printed by permission from The Dun and Bradstreet Corporation, Business Failure Record, corresponding years, and direct correspondence.

TABLE 7.7 — RETAIL TRADE DATA, BY TYPE OF ESTABLISHMENT, METROPOLITAN STATISTICAL AREAS, 1997 [Dollar amounts in thousands]

MSA and type of establishment	Number of establishments	Sales	Annual payroll	Number of paid employees <sup>1</sup>
<b>CHATTANOOGA, Total</b>	<b>2,048</b>	<b>\$4,194,592</b>	<b>\$404,710</b>	<b>25,869</b>
Building material and garden equipment and supplies dealers	173	413,367	46,026	2,259
Clothing & clothing accessories stores	276	239,988	27,160	2,415
Electronics and appliance stores	73	81,595	10,132	487
Food and beverage stores	210	659,371	58,747	4,953
Furniture & home furnishings stores	93	99,871	13,248	719
Gasoline stations	311	496,214	32,680	1,872
General merchandise stores	77	617,654	58,304	5,109
Health and personal care stores	170	200,394	29,155	1,649
Motor vehicle and parts dealers	237	1,047,677	85,129	3,222
Sporting goods, hobby, book & music stores	124	108,999	11,816	1,013
Miscellaneous store retailers	225	144,561	18,015	1,444
Nonstore retailers	79	84,901	14,298	727
<b>CLARKSVILLE-HOPKINSVILLE, Total</b>	<b>824</b>	<b>1,640,715</b>	<b>151,795</b>	<b>9,731</b>
Building material and garden equipment and supplies dealers	92	191,796	21,668	987
Clothing & clothing accessories stores	102	73,467	8,794	800
Electronics and appliance stores	36	31,471	3,891	202
Food and beverage stores	89	162,496	16,241	1,426
Furniture & home furnishings stores	51	40,123	6,028	334
Gasoline stations	114	163,623	8,541	713
General merchandise stores	37	330,865	31,019	2,565
Health and personal care stores	47	43,473	6,317	325
Motor vehicle and parts dealers	111	499,198	35,839	1,481
Sporting goods, hobby, book & music stores	42	24,825	3,279	270
Miscellaneous store retailers	81	50,349	6,763	486
Nonstore retailers	22	29,029	3,415	142
<b>JACKSON, Total</b>	<b>647</b>	<b>1,296,271</b>	<b>122,703</b>	<b>8,650</b>
Building material and garden equipment and supplies dealers	54	180,466	20,043	902
Clothing & clothing accessories stores	88	91,304	10,255	911
Electronics and appliance stores	26	19,123	2,796	132
Food and beverage stores	47	97,097	8,499	1,066
Furniture & home furnishings stores	96	94,043	10,925	1,049
Gasoline stations	77	129,052	8,877	755
General merchandise stores	25	241,927	21,658	1,914
Health and personal care stores	39	34,584	4,653	310
Motor vehicle and parts dealers	64	294,552	20,305	719
Sporting goods, hobby, book & music stores	39	29,888	3,161	288
Miscellaneous store retailers	76	64,243	8,563	444
Nonstore retailers	16	19,992	2,968	160
<b>JOHNSON CITY-KINGSPORT-BRISTOL, Total</b>	<b>2,137</b>	<b>4,041,392</b>	<b>369,382</b>	<b>24,655</b>
Building material and garden equipment and supplies dealers	174	432,893	41,626	2,165
Clothing & clothing accessories stores	241	175,217	20,633	1,812
Electronics and appliance stores	81	66,446	8,394	439
Food and beverage stores	219	580,007	49,586	4,649
Furniture & home furnishings stores	118	103,333	14,034	836
Gasoline stations	326	383,755	24,220	2,086
General merchandise stores	87	726,617	66,205	5,611
Health and personal care stores	159	191,361	26,494	1,358
Motor vehicle and parts dealers	306	1,085,807	83,455	3,225

TABLE 7.7 — RETAIL TRADE DATA, BY TYPE OF ESTABLISHMENT, METROPOLITAN STATISTICAL AREAS, 1997 [Dollar amounts in thousands] (Continued)

MSA and type of establishment	Number of establishments	Sales	Annual payroll	Number of paid employees <sup>1</sup>
JOHNSON CITY-KINGSPORT-BRISTOL (continued)				
Sporting goods, hobby, book & music stores	124	\$65,596	\$7,584	686
Miscellaneous store retailers	229	162,589	16,382	1,207
Nonstore retailers	73	67,771	10,769	581
KNOXVILLE, Total				
Building material and garden equipment and supplies dealers	280	783,098	89,518	3,961
Clothing & clothing accessories stores	531	472,034	52,998	4,365
Electronics and appliance stores	116	165,802	16,629	813
Food and beverage stores	361	1,059,626	98,100	8,230
Furniture & home furnishings stores	191	253,288	33,179	1,545
Gasoline stations	454	799,867	42,500	3,190
General merchandise stores	109	1,059,506	100,157	8,203
Health and personal care stores	233	319,210	41,657	2,573
Motor vehicle and parts dealers	377	2,456,653	180,539	5,997
Sporting goods, hobby, book & music stores	246	176,198	22,569	1,873
Miscellaneous store retailers	514	303,522	43,442	2,796
Nonstore retailers	106	228,355	27,423	1,476
MEMPHIS, Total				
Building material and garden equipment and supplies dealers	305	856,369	94,499	4,028
Clothing & clothing accessories stores	743	625,336	78,579	6,979
Electronics and appliance stores	141	188,068	20,788	1,174
Food and beverage stores	544	1,311,768	131,609	13,898
Furniture & home furnishings stores	267	352,238	49,613	2,304
Gasoline stations	480	1,009,312	51,708	4,075
General merchandise stores	162	1,576,992	159,053	13,762
Health and personal care stores	311	521,856	66,474	4,800
Motor vehicle and parts dealers	489	3,403,697	269,248	8,340
Sporting goods, hobby, book & music stores	238	218,083	26,193	2,056
Miscellaneous store retailers	471	254,584	36,614	2,891
Nonstore retailers	145	158,087	28,501	1,305
NASHVILLE, Total				
Building material and garden equipment and supplies dealers	392	1,275,168	148,520	6,028
Clothing & clothing accessories stores	790	675,479	82,978	7,508
Electronics and appliance stores	181	320,326	38,824	1,804
Food and beverage stores	552	1,740,793	174,509	12,912
Furniture & home furnishings stores	334	404,453	59,534	2,580
Gasoline stations	647	1,140,257	66,999	4,527
General merchandise stores	180	1,922,575	192,203	15,931
Health and personal care stores	405	544,833	74,636	4,505
Motor vehicle and parts dealers	626	3,751,247	291,958	9,231
Sporting goods, hobby, book & music stores	328	298,831	33,803	2,465
Miscellaneous store retailers	614	385,671	51,990	3,722
Nonstore retailers	233	320,915	41,955	1,912

Note: 1997 data are based on the North American Industry Classification System (NAICS), unlike earlier censuses, which were published according to the Standard Industrial Classification (SIC) system. As a result, 1997 data may not be directly comparable to previous years. All dollar values are expressed as current dollars; i.e., 1997 dollars. Includes only establishments with payroll.

1. Survey taken during week of March 12.

Source: U.S. Census Bureau, 1997 Economic Census, Retail Trade: Geographic Area Series, Tennessee.

TABLE 7.8 — WHOLESALE TRADE DATA, BY TYPE OF BUSINESS ESTABLISHMENT, METROPOLITAN STATISTICAL AREAS, 1997 [Dollar amounts in thousands]

MSA and kind of business	Number of establishments	Sales	Annual payroll	Number of paid employees <sup>1</sup>	Operating expenses	End-of-1996 inventories	End-of-1997 inventories
<b>CHATTANOOGA</b>							
Wholesale trade	814	\$4,889,345	\$302,297	10,120	\$603,017	\$370,452	\$398,899
Merchant wholesalers	689	3,051,602	252,848	8,553	506,929	331,585	358,355
Manufacturers' sales branches and sales offices	57	(D)	(D)	(c)	(D)	(D)	(D)
Agents, brokers, and commission merchants	68	(D)	(D)	(b)	(D)	(D)	(D)
<b>CLARKSVILLE-HOPKINSVILLE</b>							
Wholesale trade	172	964,304	58,969	1,997	116,810	138,411	128,494
Merchant wholesalers	143	710,655	44,479	1,546	88,655	131,164	121,824
Manufacturers' sales branches and sales offices	12	178,495	12,940	256	25,017	7,179	6,643
Agents, brokers, and commission merchants	17	75,154	1,550	195	3,138	68	27
<b>JACKSON</b>							
Wholesale trade	171	790,837	61,783	2,248	119,648	89,340	94,962
Merchant wholesalers	157	600,914	51,244	1,807	101,222	64,095	69,599
Manufacturers' sales branches and sales offices	11	(D)	(D)	(b)	(D)	(D)	(D)
Agents, brokers, and commission merchants	3	(D)	(D)	(a)	(D)	(D)	(D)
<b>JOHNSON CITY-KINGSPOUR-BRISTOL</b>							
Wholesale trade	548	3,732,190	194,445	7,332	390,166	279,151	315,087
Merchant wholesalers	453	2,709,303	149,336	5,769	287,490	256,925	281,047
Manufacturers' sales branches and sales offices	49	570,971	36,524	931	87,216	22,103	33,936
Agents, brokers, and commission merchants	46	451,916	8,585	632	15,460	123	104
<b>KNOXVILLE</b>							
Wholesale trade	1,198	8,438,018	509,733	14,821	961,166	552,271	559,314
Merchant wholesalers	988	5,872,172	397,879	12,370	755,683	511,744	509,119
Manufacturers' sales branches and sales offices	94	1,774,020	93,777	1,825	174,652	39,849	49,295
Agents, brokers, and commission merchants	116	791,826	18,077	626	30,831	678	900

TABLE 7.8 — WHOLESALE TRADE DATA, BY TYPE OF BUSINESS ESTABLISHMENT, METROPOLITAN STATISTICAL AREAS, 1997 [Dollar amounts in thousands]  
(Continued)

MSA and kind of business	Number of establishments	Sales	Annual payroll	Number of paid employees <sup>1</sup>	Operating expenses	End-of-1996 inventories	End-of-1997 inventories
<b>MEMPHIS</b>							
Wholesale trade	2,050	\$37,008,218	\$1,277,488	36,575	\$2,572,355	\$3,061,718	\$3,185,945
Merchant wholesalers	1,611	17,978,590	939,685	27,585	1,857,035	2,709,607	2,838,081
Manufacturers' sales branches and sales offices	212	15,067,727	265,874	5,993	588,352	346,966	345,093
Agents, brokers, and commission merchants	227	3,961,901	71,929	2,997	126,968	5,145	2,771
<b>NASHVILLE</b>							
Wholesale trade	2,213	23,385,223	1,288,766	35,488	2,616,177	1,510,718	1,586,775
Merchant wholesalers	1,729	12,898,454	976,018	28,007	1,920,442	1,151,827	1,244,325
Manufacturers' sales branches and sales offices	234	7,376,833	252,436	5,766	577,017	357,158	340,633
Agents, brokers, and commission merchants	250	3,109,936	60,312	1,715	118,718	1,733	1,817

Note: 1997 data are based on the North American Industry Classification System (NAICS), unlike earlier censuses, which were published according to the Standard Industrial Classification (SIC) system. As a result, 1997 data may not be directly comparable to previous years. All dollar values are expressed as current dollars; i.e., 1997 dollars.

(D) Withheld to avoid disclosing operations of individual companies.

- a. Range is 0 to 19 employees.
  - b. Range is 250 to 499 employees.
  - c. Range is 1,000 to 2,499 employees.
1. Survey taken during week of March 12.

Source: U.S. Census Bureau, 1997 Economic Census, Wholesale Trade: Geographic Area Series, Tennessee.

TABLE 7.9 — SERVICE-TYPE INDUSTRY DATA, BY TYPE OF BUSINESS ESTABLISHMENT, METROPOLITAN STATISTICAL AREAS, 1997 [Dollar amounts in thousands]

Kind of business and MSA	Number of establishments	Receipts/revenue/sales	Annual payroll	Number of paid employees <sup>1</sup>
<b>CHATTANOOGA, TN-GA</b>				
Taxable Industries				
Accommodation and foodservices	882	\$538,386	\$149,475	15,946
Administrative and support and waste management and remediation services	471	405,869	187,347	13,778
Arts, entertainment, and recreation	102	54,458	17,617	1,205
Educational services	47	10,694	3,742	278
Health care and social assistance	908	949,653	422,623	12,904
Professional, scientific, and technical services	776	425,194	170,655	4,980
Other services (except public administration)	690	267,053	80,984	4,483
Non-Taxable Industries				
Arts, entertainment, and recreation	39	44,660	16,529	1,075
Educational services	12	10,169	4,847	253
Health care and social assistance	205	721,865	280,384	10,202
Professional, scientific, and technical services	3	(D)	(D)	(a)
Other services (except public administration)	116	116,126	12,307	561
<b>CLARKSVILLE-HOPKINSVILLE, TN-KY</b>				
Taxable Industries				
Accommodation and foodservices	338	187,848	55,505	6,907
Administrative and support and waste management and remediation services	125	67,200	30,198	2,323
Arts, entertainment, and recreation	40	12,489	2,716	340
Educational services	17	4,838	2,109	174
Health care and social assistance	249	188,452	80,649	3,422
Professional, scientific, and technical services	199	66,301	19,958	1,076
Other services (except public administration)	256	61,711	16,696	1,141
Non-Taxable Industries				
Arts, entertainment, and recreation	5	4,190	1,428	81
Educational services	17	4,838	2,109	174
Health care and social assistance	57	288,487	142,999	4,954
Professional, scientific, and technical services	2	(D)	(D)	(a)
Other services (except public administration)	37	7,591	1,739	141
<b>JACKSON, TN</b>				
Taxable Industries				
Accommodation and foodservices	202	144,294	39,233	4,416
Administrative and support and waste management and remediation services	113	64,542	32,843	2,561
Arts, entertainment, and recreation	25	6,761	2,030	202
Educational services	11	3,364	1,106	78
Health care and social assistance	214	299,884	152,713	3,917
Professional, scientific, and technical services	148	79,059	37,123	1,009
Other services (except public administration)	182	60,320	18,937	1,106
Non-Taxable Industries				
Arts, entertainment, and recreation	7	4,058	1,751	283
Educational services	1	(D)	(D)	(a)
Health care and social assistance	53	(D)	(D)	(d)
Professional, scientific, and technical services	1	(D)	(D)	(b)
Other services (except public administration)	28	7,134	1,338	80

TABLE 7.9 — SERVICE-TYPE INDUSTRY DATA, BY TYPE OF BUSINESS ESTABLISHMENT, METROPOLITAN STATISTICAL AREAS, 1997 [Dollar amounts in thousands] (Continued)

Kind of business and MSA	Number of establishments	Receipts/revenue/sales	Annual payroll	Number of paid employees <sup>1</sup>
<b>JOHNSON CITY-KINGSPORT-BRISTOL, TN-VA</b>				
Taxable Industries				
Accommodation and foodservices	721	\$444,973	\$127,730	15,467
Administrative and support and waste management and remediation services	298	270,029	126,220	8,656
Arts, entertainment, and recreation	94	74,360	13,465	778
Educational services	35	5,355	1,616	145
Health care and social assistance	859	847,057	388,765	12,513
Professional, scientific, and technical services	663	305,595	117,319	3,861
Other services (except public administration)	663	199,542	63,819	3,823
Non-Taxable Industries				
Arts, entertainment, and recreation	27	13,637	5,562	442
Educational services	6	393	194	16
Health care and social assistance	177	750,976	311,117	11,102
Professional, scientific, and technical services	4	1,606	727	24
Other services (except public administration)	125	32,099	7,187	557
<b>KNOXVILLE, TN</b>				
Taxable Industries				
Accommodation and foodservices	1,584	1,133,216	317,487	31,961
Administrative and support and waste management and remediation services	679	731,926	355,369	18,971
Arts, entertainment, and recreation	252	200,953	58,889	3,339
Educational services	70	17,079	6,247	337
Health care and social assistance	1,348	1,241,885	583,340	15,182
Professional, scientific, and technical services	1,397	1,750,276	699,856	17,148
Other services (except public administration)	1,071	346,901	109,635	6,437
Non-Taxable Industries				
Arts, entertainment, and recreation	53	32,088	11,997	648
Educational services	15	3,235	1,139	85
Health care and social assistance	285	1,385,492	535,858	20,686
Professional, scientific, and technical services	19	(D)	(D)	(c)
Other services (except public administration)	218	129,524	22,197	1,302
<b>MEMPHIS, TN-AR-MS</b>				
Taxable Industries				
Accommodation and foodservices	1,689	1,509,597	409,536	40,218
Administrative and support and waste management and remediation services	1,188	1,660,001	786,815	44,031
Arts, entertainment, and recreation	184	166,459	43,359	3,495
Educational services	101	34,011	11,136	666
Health care and social assistance	1,960	2,127,227	896,916	25,156
Professional, scientific, and technical services	1,864	1,555,674	583,098	16,144
Other services (except public administration)	1,599	763,729	240,143	12,008
Non-Taxable Industries				
Arts, entertainment, and recreation	42	91,381	28,872	1,754
Educational services	25	6,738	1,870	119
Health care and social assistance	412	2,383,981	925,352	32,003
Professional, scientific, and technical services	12	15,248	4,382	130
Other services (except public administration)	245	368,114	41,740	1,989



TABLE 7.9 — SERVICE-TYPE INDUSTRY DATA, BY TYPE OF BUSINESS ESTABLISHMENT, METROPOLITAN STATISTICAL AREAS, 1997 [Dollar amounts in thousands] (Continued)

Kind of business and MSA	Number of establishments	Receipts/revenue/sales	Annual payroll	Number of paid employees <sup>1</sup>
<b>NASHVILLE, TN</b>				
<b>Taxable Industries</b>				
Accommodation and foodservices	2,248	\$2,076,482	\$586,424	55,500
Administrative and support and waste management and remediation services	1,531	1,636,976	816,951	41,538
Arts, entertainment, and recreation	786	692,084	246,882	8,012
Educational services	179	67,436	28,235	1,298
Health care and social assistance	2,468	3,172,388	1,370,428	44,414
Professional, scientific, and technical services	2,682	2,219,528	832,033	21,278
Other services (except public administration)	1,858	882,551	267,530	13,207
<b>Non-Taxable Industries</b>				
Arts, entertainment, and recreation	65	94,475	34,590	1,691
Educational services	34	8,473	2,556	132
Health care and social assistance	425	2,010,128	864,334	30,551
Professional, scientific, and technical services	17	13,880	8,337	315
Other services (except public administration)	479	404,104	122,148	5,925

Note: 1997 data are based on the North American Industry Classification System (NAICS), unlike earlier censuses, which were published according to the Standard Industrial Classification (SIC) system. As a result, 1997 data may not be directly comparable to previous years. All dollar values are expressed as current dollars; i.e., 1997 dollars. Data for auxiliaries excluded. TAXABLE INDUSTRIES defined as the taxable portion of the Services sectors.

(D) Withheld to avoid disclosing data of individual companies.

- a. Range is 0 to 19 employees.
- b. Range is 20 to 99 employees.
- c. Range is 500 to 999 employees.
- d. Range is 2,500 to 4,999 employees.

Source: U.S. Bureau of the Census, 1997 Economic Census.

TABLE 7.10 — RETAIL SALES OF ESTABLISHMENTS, BY TYPE OF ESTABLISHMENT, COUNTIES, 2001

County	Total	Building material dealers, etc.	General merchandise	Food stores	Autos, boats and aircraft
Anderson	\$815,556,686	\$44,727,380	\$133,032,489	\$187,214,941	\$231,426,735
Bedford	318,159,949	17,967,260	40,927,655	72,489,136	83,213,892
Benton	123,570,313	6,305,409	28,310,100	33,111,383	17,573,528
Bledsoe	33,448,835	2,499,458	4,434,632	15,040,492	2,517,900
Blount	1,345,496,083	115,322,045	184,773,341	204,224,629	531,612,104
Bradley	898,758,091	90,542,521	162,738,925	161,526,036	189,382,714
Campbell	294,974,162	13,821,253	66,379,422	59,940,828	47,818,657
Cannon	39,566,489	510,326	4,537,600	15,218,862	6,361,847
Carroll	162,374,347	11,156,321	24,104,482	53,522,667	28,468,287
Carter	353,219,747	18,404,155	60,567,783	100,758,854	92,252,207
Cheatham	172,690,479	6,726,498	20,120,862	60,601,305	25,914,424
Chester	117,927,974	13,176,286	6,142,881	18,350,513	48,696,824
Claiborne	140,396,958	9,171,366	20,792,282	40,536,524	11,277,781
Clay	37,219,749	2,698,685	1,521,495	10,206,747	5,134,325
Cocke	269,257,856	12,799,607	69,134,834	57,553,793	48,312,035
Coffee	636,742,558	60,539,522	133,366,809	117,627,898	154,237,752
Crockett	47,135,623	1,719,096	2,305,068	20,551,131	4,333,669
Cumberland	532,003,536	74,020,166	101,162,895	111,882,881	100,249,446
Davidson	9,710,259,181	580,426,098	1,052,629,000	1,386,107,170	2,348,804,400
Decatur	74,704,285	5,339,990	5,331,058	24,180,093	15,711,947
DeKalb	104,035,639	4,546,705	7,890,700	36,637,445	20,460,875
Dickson	499,176,840	36,864,173	123,046,088	106,227,137	107,809,338
Dyer	377,963,589	26,612,611	94,859,248	66,938,759	81,924,833
Fayette	104,319,642	8,338,768	13,104,178	33,507,679	17,020,330
Fentress	104,761,967	12,014,477	19,044,712	33,770,991	10,354,851
Franklin	270,828,323	15,027,405	66,324,789	54,217,922	62,084,765
Gibson	344,300,565	9,175,629	68,262,180	84,734,989	95,939,595
Giles	227,512,394	8,224,824	49,122,991	57,282,844	44,212,838
Grainger	67,329,123	1,891,754	3,498,872	28,625,251	16,441,230
Greene	544,530,269	62,063,959	83,496,396	132,630,730	100,131,468
Grundy	61,706,676	9,205,953	2,852,110	20,949,757	5,336,341
Hamblen	928,553,583	62,716,269	128,114,563	128,049,436	261,816,935
Hamilton	4,168,687,346	303,977,850	616,549,388	691,256,771	948,769,043
Hancock	22,706,405	1,120,703	(D)	8,049,871	1,431,628
Hardeman	140,184,175	8,070,758	26,927,126	47,513,559	28,517,473
Hardin	203,282,659	12,136,180	34,720,919	45,032,476	54,987,408
Hawkins	255,263,147	26,491,027	26,057,372	93,591,329	31,426,567
Haywood	130,989,306	2,907,612	21,629,474	32,647,112	35,993,736
Henderson	219,090,589	14,945,378	38,215,254	62,777,671	48,225,237
Henry	362,317,050	39,337,566	83,244,987	85,671,219	65,120,367
Hickman	79,761,978	3,231,282	7,896,465	36,205,284	7,152,626
Houston	30,498,271	(D)	(D)	12,923,108	1,749,277
Humphreys	120,795,008	6,658,464	21,692,049	41,794,924	10,560,694
Jackson	32,859,120	(D)	(D)	14,039,229	1,874,601
Jefferson	345,397,862	15,520,635	75,483,530	128,342,460	38,224,522
Johnson	77,290,510	9,931,652	3,990,655	33,399,725	4,997,557
Knox	6,341,600,324	499,436,670	902,935,144	914,320,064	1,265,707,697
Lake	24,548,699	(D)	3,179,715	10,724,103	433,522
Lauderdale	152,326,308	10,015,273	40,029,455	33,435,191	10,670,707
Lawrence	323,621,138	16,159,674	77,532,029	69,439,973	78,411,552

TABLE 7.10 — RETAIL SALES OF ESTABLISHMENTS, BY TYPE OF ESTABLISHMENT, COUNTIES, 2001 (Continued)

Service stations	Apparel, accessory stores	Furniture and home-furnishings	Eating, drinking places	Miscellaneous retail stores	County
\$11,144,037	\$4,732,460	\$26,667,230	\$72,590,378	\$104,021,043	Anderson
5,376,431	1,446,578	6,365,209	23,767,646	66,606,145	Bedford
16,529,462	447,665	1,337,132	10,217,407	9,738,230	Benton
(D)	(D)	641,103	2,294,187	5,911,540	Bledsoe
19,710,419	10,862,004	24,270,810	104,980,881	149,739,853	Blount
26,645,532	20,892,816	29,883,858	86,326,002	130,819,702	Bradley
24,382,040	4,320,655	4,625,481	24,435,172	49,250,655	Campbell
(D)	(D)	1,385,202	3,486,319	(D)	Cannon
3,098,307	1,675,861	5,544,778	12,829,414	21,974,245	Carroll
3,669,131	2,094,128	4,492,800	29,099,222	41,881,461	Carter
20,646,049	576,994	3,365,096	15,536,474	19,202,787	Cheatham
7,785,630	611,315	3,229,316	6,554,569	13,380,640	Chester
5,528,008	410,308	2,157,517	13,332,972	37,190,209	Claiborne
2,156,371	(D)	(D)	3,537,371	(D)	Clay
17,789,431	3,396,863	2,746,907	32,227,310	25,297,069	Cocke
19,451,881	9,526,719	14,322,167	57,679,904	69,989,911	Coffee
2,617,429	826,557	908,778	2,209,968	11,663,918	Crockett
14,741,934	24,029,762	15,185,743	44,454,288	46,276,421	Cumberland
232,081,980	439,429,655	783,675,077	1,050,225,048	1,836,880,754	Davidson
6,574,345	694,655	356,328	5,090,949	11,424,929	Decatur
(D)	694,952	2,117,387	8,090,350	(D)	DeKalb
15,588,454	10,945,804	14,318,766	43,229,288	41,147,789	Dickson
12,565,578	9,486,357	11,430,360	29,935,405	44,210,441	Dyer
6,173,920	143,079	1,416,549	10,432,727	14,182,409	Fayette
4,658,048	884,571	1,458,741	5,537,484	17,038,089	Fentress
5,478,050	2,855,086	9,715,614	22,311,030	32,813,663	Franklin
12,605,772	3,855,748	4,971,011	26,581,704	38,173,947	Gibson
16,553,751	3,231,802	4,967,677	19,712,330	24,203,337	Giles
2,419,927	11,868	690,145	4,067,664	9,682,421	Grainger
20,520,812	5,567,079	6,145,477	48,983,511	84,990,835	Greene
7,232,139	187,987	993,955	5,000,262	9,948,172	Grundy
157,714,892	12,449,730	11,887,454	64,154,284	101,650,018	Hamblen
47,233,156	177,556,114	189,650,192	442,860,298	750,834,545	Hamilton
(D)	(D)	713,419	1,711,489	8,360,542	Hancock
3,902,158	569,341	1,617,805	12,775,994	10,289,967	Hardeman
8,817,772	2,043,458	3,947,563	18,024,491	23,572,393	Hardin
10,499,046	2,380,205	4,332,580	27,791,799	32,693,216	Hawkins
13,411,272	970,949	2,023,266	11,480,629	9,925,253	Haywood
5,591,594	2,597,041	6,443,636	16,757,737	23,537,046	Henderson
15,249,492	3,686,756	8,662,932	25,425,041	35,918,689	Henry
971,923	215,567	698,312	6,049,343	17,341,176	Hickman
801,460	(D)	702,485	2,413,548	5,065,035	Houston
16,036,663	376,149	1,248,171	9,330,689	13,097,202	Humphreys
2,256,492	(D)	1,769,291	2,038,852	(D)	Jackson
16,794,287	770,639	5,752,679	36,164,813	28,344,299	Jefferson
(D)	294,695	1,781,265	5,828,439	(D)	Johnson
295,923,242	254,630,561	360,452,804	607,272,206	1,240,921,937	Knox
(D)	(D)	(D)	2,276,904	4,926,855	Lake
9,096,845	2,806,905	2,040,404	9,210,907	35,020,633	Lauderdale
8,432,837	3,267,960	15,347,942	26,293,299	28,735,870	Lawrence

TABLE 7.10 — RETAIL SALES OF ESTABLISHMENTS, BY TYPE OF ESTABLISHMENT, COUNTIES, 2001 (Continued)

County	Total	Building material dealers, etc.	General merchandise	Food stores	Autos, boats and aircraft
Lewis	\$82,510,256	\$2,936,418	\$14,792,761	\$22,283,125	\$4,970,065
Lincoln	273,337,394	18,932,056	66,930,719	48,443,208	76,436,310
Loudon	362,691,057	26,428,951	68,342,511	61,539,810	86,040,233
Macon	127,878,174	12,886,616	44,514,906	22,161,108	9,532,197
Madison	1,457,427,394	135,750,038	313,299,228	193,525,133	294,657,468
Marion	262,700,126	12,121,968	68,937,937	56,110,163	44,834,763
Marshall	184,466,479	12,077,228	26,739,309	63,621,697	32,837,120
Mauzy	709,849,497	66,543,323	105,233,747	163,081,261	149,138,212
McMinn	452,765,756	62,518,073	71,010,499	115,813,108	89,626,481
McNairy	145,888,836	5,242,490	41,212,757	30,784,175	16,762,786
Meigs	33,121,326	2,247,809	(D)	18,339,859	2,645,179
Monroe	312,022,980	30,336,068	71,449,188	78,852,021	57,259,742
Montgomery	1,448,632,349	108,409,426	318,701,210	210,655,493	384,876,707
Moore	12,068,742	(D)	(D)	1,984,990	(D)
Morgan	46,819,728	2,676,354	4,487,183	20,012,220	5,665,962
Obion	327,242,819	23,704,026	77,067,664	54,323,606	68,527,678
Overton	109,715,058	7,853,562	11,524,743	35,030,216	17,765,069
Perry	43,480,880	6,487,312	1,619,614	13,017,464	1,864,548
Pickett	22,523,733	1,324,692	(D)	10,503,383	(D)
Polk	71,315,208	89,979	6,098,421	25,406,305	13,755,368
Putnam	885,637,126	95,743,921	174,962,563	138,553,061	176,131,114
Rhea	184,225,893	14,550,471	24,924,649	64,113,182	32,535,137
Roane	452,313,304	14,525,246	68,348,172	89,739,458	99,658,182
Robertson	406,608,331	20,338,302	54,117,040	112,367,820	99,884,064
Rutherford	2,028,037,011	199,699,251	363,504,713	386,640,842	407,349,454
Scott	145,721,025	13,269,081	46,279,683	32,772,062	13,001,093
Sequatchie	73,682,953	8,738,828	3,257,171	25,628,993	16,369,155
Sevier	1,457,822,975	126,400,004	150,033,307	233,480,656	115,815,761
Shelby	11,537,142,881	482,266,544	1,595,314,008	1,435,493,405	2,972,353,144
Smith	117,488,982	8,470,315	16,451,603	31,443,145	15,165,616
Stewart	56,459,526	9,537,214	1,631,746	18,425,652	12,178,797
Sullivan	1,905,591,036	111,430,830	342,941,408	261,334,137	583,075,799
Sumner	892,539,926	77,209,978	158,341,762	246,706,962	143,906,263
Tipton	267,913,907	15,345,942	36,838,268	67,457,148	73,635,356
Trousdale	34,364,377	(D)	(D)	12,581,555	3,664,582
Unicoi	80,489,164	2,747,221	(D)	30,853,181	14,075,276
Union	46,062,617	3,247,703	3,056,253	17,780,508	2,953,990
Van Buren	11,368,578	(D)	(D)	7,184,853	(D)
Warren	342,046,719	43,351,595	94,463,826	64,289,975	49,600,686
Washington	1,517,058,484	153,005,388	261,336,752	210,681,268	337,719,208
Wayne	62,802,943	4,900,420	7,267,265	26,691,946	6,056,988
Weakley	197,706,174	16,093,542	32,727,463	50,025,183	36,134,667
White	185,645,512	12,229,118	23,305,237	44,841,670	66,663,457
Williamson	2,117,498,850	126,349,363	363,875,952	325,500,380	451,089,640
Wilson	778,223,627	45,748,832	128,841,518	173,487,466	168,898,235

TABLE 7.10 — RETAIL SALES OF ESTABLISHMENTS, BY TYPE OF ESTABLISHMENT, COUNTIES, 2001 (Continued)

Service stations	Apparel, accessory stores	Furniture and home-furnishings	Eating, drinking places	Miscellaneous retail stores	County
\$21,858,179	\$118,652	\$940,495	\$5,381,344	\$9,229,217	Lewis
16,286,221	2,516,321	4,511,792	14,216,339	25,064,422	Lincoln
40,151,289	2,485,731	4,910,550	30,367,120	42,424,866	Loudon
7,310,683	701,684	6,254,542	9,682,931	14,833,507	Macon
68,762,908	58,981,793	63,901,369	140,607,548	187,941,915	Madison
12,891,530	4,272,078	7,178,739	25,897,330	30,455,618	Marion
8,631,549	1,476,650	6,044,707	14,818,690	18,219,531	Marshall
26,095,193	9,611,970	14,267,757	63,590,322	112,287,717	Maury
8,707,836	8,173,053	10,462,758	38,939,811	47,514,138	McMinn
14,600,221	625,841	2,615,854	11,549,509	22,495,203	McNairy
(D)	(D)	498,108	3,089,527	4,279,337	Meigs
5,177,449	3,076,460	4,593,860	31,422,400	29,855,786	Monroe
20,756,200	52,200,109	49,208,376	140,901,214	162,923,615	Montgomery
(D)	(D)	(D)	1,242,425	7,062,438	Moore
3,147,872	197,569	419,365	3,039,999	7,173,213	Morgan
5,985,556	14,081,099	9,192,002	19,446,310	54,914,875	Obion
7,288,825	576,651	2,079,043	9,583,987	18,012,956	Overton
(D)	(D)	249,634	13,093,830	5,787,288	Perry
(D)	(D)	(D)	2,941,192	5,840,969	Pickett
(D)	365,126	399,633	7,208,877	(D)	Polk
51,861,825	24,907,879	27,750,713	91,689,489	104,036,558	Putnam
5,436,917	2,459,845	2,769,502	20,495,082	16,941,111	Rhea
17,119,159	4,704,212	7,604,872	30,889,896	119,724,097	Roane
18,040,254	5,529,078	8,373,056	37,673,451	50,285,273	Robertson
52,548,339	57,090,251	60,532,722	199,127,665	301,543,770	Rutherford
2,330,202	1,421,229	3,294,827	11,667,758	21,685,082	Scott
3,697,904	(D)	1,802,110	5,397,763	(D)	Sequatchie
21,016,710	211,821,210	47,958,956	308,995,731	242,300,635	Sevier
283,346,283	564,277,741	590,828,823	1,152,324,043	2,460,938,890	Shelby
6,768,318	(D)	10,771,429	10,715,353	(D)	Smith
(D)	(D)	1,461,722	4,713,193	8,111,147	Stewart
50,350,226	40,108,183	47,024,938	182,296,956	287,028,570	Sullivan
29,039,076	10,128,820	14,422,326	84,986,484	127,798,255	Sumner
6,275,845	4,882,549	4,042,879	21,171,966	38,263,951	Tipton
3,258,022	(D)	605,646	2,470,465	(D)	Trousdale
2,024,600	1,557,805	1,476,556	9,021,024	(D)	Unicoi
(D)	1,904,978	1,625,812	4,427,688	(D)	Union
(D)	(D)	127,760	201,350	1,808,542	Van Buren
15,065,910	5,429,436	6,287,908	26,568,506	36,988,883	Warren
30,982,226	63,654,174	75,737,467	154,436,430	229,505,582	Washington
(D)	409,055	1,289,272	4,579,724	(D)	Wayne
12,006,766	4,343,190	3,260,421	17,981,918	25,133,018	Weakley
4,710,654	747,264	2,572,978	14,220,709	16,354,428	White
23,509,339	100,415,696	242,517,957	174,053,888	310,186,639	Williamson
33,562,311	38,096,769	21,858,279	75,776,395	91,953,821	Wilson

(D) Withheld to avoid disclosing operations of individual companies; may also represent no sales.

Source: Tennessee Department of Revenue, direct correspondence.

TABLE 7.11 — RETAIL TRADE EMPLOYEES AND PAYROLL, AND NUMBER OF ESTABLISHMENTS BY EMPLOYMENT-SIZE CLASS, COUNTIES, 2000

County	Number of employees <sup>1</sup>	Annual payroll (\$1,000)	Total	Number of establishments by employment-size class								
				1 to 4	5 to 9	10 to 19	20 to 49	50 to 99	100 to 249	250 to 499	500 or more	
Anderson	3,824	65,948	299	145	68	45	23	15	3	0	0	
Bedford	1,301	21,850	152	80	42	17	10	2	1	0	0	
Benton	665	9,928	76	39	22	10	3	1	1	0	0	
Bledsoe	148	2,046	24	13	6	3	2	0	0	0	0	
Blount	5,981	129,563	398	173	108	56	35	13	12	0	1	
Bradley	4,542	85,645	390	192	96	51	38	9	3	0	1	
Campbell	1,613	26,676	154	67	40	32	13	1	0	1	0	
Cannon	213	3,424	34	17	10	5	2	0	0	0	0	
Carroll	1,065	14,489	124	65	34	15	6	3	1	0	0	
Carter	1,617	25,921	150	77	34	22	11	3	3	0	0	
Cheatham	851	14,325	82	41	22	8	7	4	0	0	0	
Chester	529	10,314	62	30	12	14	5	1	0	0	0	
Claiborne	739	10,469	102	59	27	8	6	1	1	0	0	
Clay	177	2,443	25	16	4	4	0	1	0	0	0	
Cocke	1,298	20,637	124	63	35	18	5	2	0	1	0	
Coffee	3,322	54,059	285	127	81	50	15	7	4	1	0	
Crockett	335	5,328	64	41	11	9	3	0	0	0	0	
Cumberland	2,594	45,620	244	121	79	22	15	3	3	1	0	
Davidson	44,038	976,185	2,919	1,175	809	472	272	105	77	8	1	
Decatur	405	6,662	48	22	11	11	4	0	0	0	0	
DeKalb	458	7,230	72	40	18	10	4	0	0	0	0	
Dickson	2,300	46,162	200	91	57	30	15	5	1	1	0	
Dyer	2,081	33,601	222	114	63	24	17	3	0	1	0	
Fayette	428	7,908	63	28	21	10	4	0	0	0	0	
Fentress	641	8,999	67	34	17	6	8	1	1	0	0	
Franklin	1,527	24,903	156	82	39	22	10	2	0	1	0	
Gibson	2,072	35,660	239	122	64	35	11	5	2	0	0	
Giles	1,396	23,315	137	70	33	19	12	2	0	1	0	
Grainger	471	5,443	56	24	19	9	3	1	0	0	0	
Greene	3,149	48,174	242	115	70	27	16	8	5	1	0	
Grundy	427	5,655	52	22	17	9	3	1	0	0	0	
Hamblen	3,436	73,957	320	146	100	41	20	10	2	1	0	
Hamilton	20,005	384,353	1,496	618	430	234	136	42	33	3	0	
Hancock	108	1,750	24	17	4	2	1	0	0	0	0	
Hardeman	773	13,609	95	44	34	11	4	1	1	0	0	
Hardin	1,011	16,565	127	68	35	15	6	2	1	0	0	
Hawkins	1,534	22,805	140	72	36	13	13	5	1	0	0	
Haywood	732	13,106	90	53	20	9	5	2	1	0	0	
Henderson	1,095	18,156	124	69	24	22	6	2	1	0	0	
Henry	1,451	26,092	156	75	46	26	8	0	0	1	0	
Hickman	332	4,847	68	44	13	6	5	0	0	0	0	
Houston	158	2,383	25	14	7	3	1	0	0	0	0	
Humphreys	676	10,894	76	35	21	12	6	1	1	0	0	
Jackson	139	1,567	33	25	5	1	2	0	0	0	0	
Jefferson	1,549	26,807	118	59	30	13	11	4	0	1	0	
Johnson	491	7,373	62	33	14	10	4	1	0	0	0	
Knox	28,636	572,315	1,912	755	512	343	187	64	44	7	0	
Lake	164	2,394	21	12	3	4	2	0	0	0	0	
Lauderdale	799	12,707	98	57	21	15	3	1	1	0	0	
Lawrence	1,808	30,093	209	114	53	28	8	4	1	1	0	

TABLE 7.11 — RETAIL TRADE EMPLOYEES AND PAYROLL, AND NUMBER OF ESTABLISHMENTS BY EMPLOYMENT-SIZE CLASS, COUNTIES, 2000 (Continued)

County	Number of employees <sup>1</sup>	Annual payroll (\$1,000)	Total	Number of establishments by employment-size class							
				1 to 4	5 to 9	10 to 19	20 to 49	50 to 99	100 to 249	250 to 499	500 or more
Lewis	386	6,270	54	31	11	9	2	1	0	0	0
Lincoln	1,460	22,922	141	74	38	18	8	2	0	1	0
Loudon	1,678	26,816	131	61	31	21	13	4	0	1	0
McMinn	2,263	37,010	220	111	56	29	17	5	2	0	0
McNairy	810	12,727	106	76	18	5	5	1	1	0	0
Macon	903	11,491	71	38	19	7	5	1	0	1	0
Madison	7,437	128,551	534	210	164	90	46	9	13	1	1
Marion	1,153	19,222	113	63	28	14	5	2	0	1	0
Marshall	1,196	18,809	117	61	26	17	9	3	1	0	0
Mauzy	3,368	61,618	308	136	89	50	21	8	3	1	0
Meigs	169	2,304	20	9	7	2	1	1	0	0	0
Monroe	1,843	26,579	158	81	36	23	14	1	1	2	0
Montgomery	7,267	132,647	513	200	164	84	41	8	14	2	0
Moore	(a)	(a)	12	8	2	2	0	0	0	0	0
Morgan	194	2,690	40	27	8	3	2	0	0	0	0
Obion	1,954	31,164	173	81	39	30	20	2	0	1	0
Overton	482	7,380	63	33	14	10	5	1	0	0	0
Perry	111	1,430	20	11	6	2	1	0	0	0	0
Pickett	97	1,391	19	12	4	2	1	0	0	0	0
Polk	345	4,751	52	31	12	5	3	1	0	0	0
Putnam	4,315	76,788	394	192	116	40	34	6	5	0	1
Rhea	1,021	15,273	107	52	32	13	7	1	2	0	0
Roane	1,753	29,525	179	95	38	31	9	4	2	0	0
Robertson	1,806	33,680	173	85	43	25	14	4	2	0	0
Rutherford	10,282	183,231	628	244	188	101	50	19	24	1	1
Scott	805	11,631	75	38	18	15	2	1	0	1	0
Sequatchie	312	4,741	42	23	11	6	1	1	0	0	0
Sevier	6,288	115,727	722	366	210	99	32	7	6	2	0
Shelby	54,911	1,086,918	3,499	1,408	954	563	352	127	77	15	3
Smith	584	9,824	64	38	8	13	2	3	0	0	0
Stewart	247	3,815	34	20	7	3	4	0	0	0	0
Sullivan	8,890	161,685	723	320	210	103	52	25	11	2	0
Sumner	4,418	81,417	390	181	107	62	24	11	4	1	0
Tipton	1,510	25,181	164	94	36	16	12	4	2	0	0
Trousdale	191	2,503	29	16	6	5	2	0	0	0	0
Unicoi	360	5,351	47	21	14	9	2	1	0	0	0
Union	222	3,793	38	14	15	8	1	0	0	0	0
Van Buren	27	368	7	6	0	1	0	0	0	0	0
Warren	1,825	29,420	175	86	53	18	14	3	0	1	0
Washington	7,195	124,454	542	225	167	81	38	19	11	1	0
Wayne	375	5,016	64	35	16	9	4	0	0	0	0
Weakley	1,181	17,585	140	80	30	18	9	2	1	0	0
White	845	14,813	86	55	12	8	7	3	1	0	0
Williamson	9,654	209,142	624	271	156	86	66	24	19	2	0
Wilson	4,209	79,245	355	166	101	48	27	8	4	1	0

Note: Data are based on the North American Industry Classification System (NAICS), unlike earlier County Business Patterns data, which were published according to the Standard Industrial Classification (SIC) system. As a result, 2000 data may not be directly comparable to previous years.

1. Number of employees for week including March 12.

a. 20 to 99 employees.

Source: U.S. Census Bureau, County Business Patterns 2000, Tennessee.

TABLE 7.12 — WHOLESALE TRADE EMPLOYEES AND PAYROLL, AND NUMBER OF ESTABLISHMENTS BY EMPLOYMENT-SIZE CLASS, COUNTIES, 2000

County	Number of employees <sup>1</sup>	Annual payroll (\$1,000)	Number of establishments by employment-size class					
			Total	1 to 4	5 to 9	10 to 19	20 to 49	50 or more
Anderson	376	12,421	52	26	12	10	4	0
Bedford	286	8,713	35	17	11	3	3	1
Benton	71	1,970	11	5	2	3	1	0
Bledsoe	6	160	4	4	0	0	0	0
Blount	1,801	57,487	101	56	11	20	9	5
Bradley	2,406	63,031	83	45	17	14	3	4
Campbell	172	4,501	21	10	5	4	2	0
Cannon	83	1,854	10	3	4	2	1	0
Carroll	209	5,231	25	15	4	4	1	1
Carter	194	6,340	23	16	2	2	2	1
Cheatham	120	2,934	21	13	5	2	1	0
Chester	36	635	7	3	4	0	0	0
Claiborne	62	914	12	8	1	2	1	0
Clay	(b)	(b)	4	3	0	0	1	0
Cocke	157	5,393	16	11	1	3	0	1
Coffee	360	10,251	47	19	16	8	4	0
Crockett	249	11,530	18	10	4	1	2	1
Cumberland	200	7,207	32	17	7	6	2	0
Davidson	26,925	1,096,944	1,352	503	310	245	192	102
Decatur	71	2,236	8	4	1	2	1	0
DeKalb	303	7,714	7	2	1	2	1	1
Dickson	468	13,918	37	20	9	2	4	2
Dyer	352	10,749	48	24	12	8	3	1
Fayette	131	4,673	26	17	5	3	1	0
Fentress	32	529	5	4	0	0	1	0
Franklin	114	2,682	18	12	1	4	1	0
Gibson	445	13,963	39	21	8	6	3	1
Giles	264	7,758	28	12	5	7	4	0
Grainger	60	913	7	5	1	0	1	0
Greene	611	9,998	43	26	5	6	3	3
Grundy	19	394	6	4	1	1	0	0
Hamblen	1,433	46,571	71	28	16	11	9	7
Hamilton	8,823	305,274	656	296	133	119	77	31
Hancock	(a)	(a)	2	1	1	0	0	0
Hardeman	237	5,275	23	12	5	2	3	1
Hardin	126	2,929	16	9	4	1	2	0
Hawkins	250	7,564	17	11	1	0	4	1
Haywood	77	2,432	13	9	0	4	0	0
Henderson	185	3,443	21	12	4	1	4	0
Henry	727	19,019	37	13	10	8	2	4
Hickman	48	1,221	10	5	3	2	0	0
Houston	10	119	4	3	1	0	0	0
Humphreys	84	2,734	12	6	0	6	0	0
Jackson	(a)	(a)	2	2	0	0	0	0
Jefferson	329	11,798	37	16	9	7	5	0
Johnson	(b)	(b)	2	0	1	0	1	0
Knox	13,315	568,442	954	461	175	138	132	48
Lake	(b)	(b)	7	3	4	0	0	0
Lauderdale	525	18,767	24	12	4	4	2	2
Lawrence	320	10,067	38	17	10	6	5	0



TABLE 7.12 — WHOLESALE TRADE EMPLOYEES AND PAYROLL, AND NUMBER OF ESTABLISHMENTS BY EMPLOYMENT-SIZE CLASS, COUNTIES, 2000 (Continued)

County	Number of employees <sup>1</sup>	Annual payroll (\$1,000)	Number of establishments by employment-size class					
			Total	1 to 4	5 to 9	10 to 19	20 to 49	50 or more
Lewis	67	1,400	7	3	2	1	1	0
Lincoln	167	2,734	26	15	4	4	3	0
Loudon	608	23,940	37	22	6	5	3	1
McMinn	297	7,649	39	25	5	5	4	0
McNairy	322	4,888	19	10	6	2	0	1
Macon	51	1,307	12	8	4	0	0	0
Madison	2,190	70,292	168	59	32	42	27	8
Marion	69	2,540	12	5	4	3	0	0
Marshall	120	3,045	13	6	4	1	2	0
Mauzy	708	23,089	64	30	14	11	6	3
Meigs	8	305	3	3	0	0	0	0
Monroe	140	3,112	22	15	1	5	1	0
Montgomery	715	24,192	82	40	27	4	9	2
Moore	(a)	(a)	1	1	0	0	0	0
Morgan	17	522	5	4	1	0	0	0
Obion	866	21,358	42	24	7	5	3	3
Overton	73	1,817	11	4	4	3	0	0
Perry	(b)	(b)	1	0	0	0	1	0
Pickett	(a)	(a)	1	0	0	1	0	0
Polk	22	739	7	5	1	1	0	0
Putnam	1,165	36,872	93	44	20	12	11	6
Rhea	88	2,962	13	10	1	1	0	1
Roane	197	6,683	16	6	2	5	2	1
Robertson	720	20,503	65	35	12	10	6	2
Rutherford	4,294	157,852	207	89	43	33	21	21
Scott	111	2,404	16	10	3	1	2	0
Sequatchie	155	3,727	10	4	2	3	0	1
Sevier	292	8,031	54	32	14	7	1	0
Shelby	35,494	1,514,889	1,806	771	367	296	219	153
Smith	179	2,832	13	7	3	1	1	1
Stewart	0	0	0	0	0	0	0	0
Sullivan	3,551	113,121	216	83	46	48	25	14
Sumner	1,649	50,755	143	82	32	15	8	6
Tipton	465	11,417	28	18	2	3	3	2
Trousdale	153	2,758	9	5	1	2	0	1
Unicoi	130	2,755	10	3	4	1	1	1
Union	63	775	10	7	1	1	1	0
Van Buren	(b)	(b)	1	0	0	0	1	0
Warren	432	9,957	48	22	11	7	7	1
Washington	1,997	67,227	146	61	38	29	9	9
Wayne	32	500	6	4	1	1	0	0
Weakley	742	23,333	45	23	10	4	5	3
White	431	10,814	20	13	2	2	0	3
Williamson	3,311	170,388	254	151	45	25	21	12
Wilson	1,187	43,379	106	61	28	7	7	3
County not specified	50	3,483	7	4	2	0	1	0

Note: Data are based on the North American Industry Classification System (NAICS), unlike earlier County Business Patterns data, which were published according to the Standard Industrial Classification (SIC) system. As a result, 2000 data may not be directly comparable to previous years.

1. Number of employees for week including March 12.

a. 0 to 19 employees.    b. 20 to 99 employees.

Source: U.S. Census Bureau, County Business Patterns 2000, Tennessee.

TABLE 7.13 — ACCOMMODATION AND FOOD SERVICES EMPLOYEES AND PAYROLL, AND NUMBER OF ESTABLISHMENTS BY EMPLOYMENT-SIZE CLASS, COUNTIES, 2000

County	Number of employees <sup>1</sup>	Annual payroll (\$1,000)	Number of establishments by employment-size class							
			Total	1 to 4	5 to 9	10 to 19	20 to 49	50 to 99	100 to 249	250 or more
Anderson	2,305	23,347	118	38	10	22	37	10	1	0
Bedford	694	6,516	51	17	10	12	9	3	0	0
Benton	397	2,716	35	17	5	7	5	1	0	0
Bledsoe	127	813	10	7	0	0	3	0	0	0
Blount	3,435	39,094	174	60	24	32	42	10	6	0
Bradley	2,737	28,063	145	51	19	27	37	8	3	0
Campbell	837	7,564	55	14	6	19	14	2	0	0
Cannon	129	895	10	4	3	0	3	0	0	0
Carroll	456	3,175	42	17	10	4	11	0	0	0
Carter	829	7,978	51	16	3	15	15	2	0	0
Cheatham	418	3,644	34	16	4	6	7	1	0	0
Chester	171	1,562	14	6	1	3	4	0	0	0
Claiborne	442	3,921	24	5	4	5	9	1	0	0
Clay	79	880	13	9	2	0	2	0	0	0
Cocke	836	9,111	53	16	14	4	16	3	0	0
Coffee	1,618	16,517	92	19	14	25	30	3	1	0
Crockett	78	788	9	5	3	0	1	0	0	0
Cumberland	1,147	12,636	70	24	11	13	15	7	0	0
Davidson	34,939	506,159	1,353	363	179	299	365	104	35	8
Decatur	132	1,001	25	17	5	1	2	0	0	0
DeKalb	404	3,903	23	9	3	5	4	1	1	0
Dickson	1,047	12,113	69	25	9	13	18	3	1	0
Dyer	1,276	10,353	79	27	13	14	19	5	1	0
Fayette	170	1,716	20	12	0	4	4	0	0	0
Fentress	204	1,824	17	7	2	2	6	0	0	0
Franklin	658	5,689	45	13	6	16	8	2	0	0
Gibson	1,009	6,614	67	22	11	16	15	2	1	0
Giles	559	4,360	40	16	8	5	8	3	0	0
Grainger	71	540	8	3	2	2	1	0	0	0
Greene	1,417	12,838	94	35	10	21	25	3	0	0
Grundy	148	1,316	11	5	1	1	4	0	0	0
Hamblen	2,423	22,158	96	18	13	16	36	10	3	0
Hamilton	13,728	151,256	671	169	111	143	197	32	18	1
Hancock	(b)	(b)	2	0	1	0	1	0	0	0
Hardeman	305	2,143	27	14	3	6	2	2	0	0
Hardin	696	5,303	49	21	10	9	6	2	1	0
Hawkins	774	6,135	54	14	11	17	10	2	0	0
Haywood	344	3,036	30	13	3	7	6	1	0	0
Henderson	606	5,132	39	14	5	8	10	2	0	0
Henry	866	7,398	63	23	9	12	17	2	0	0
Hickman	(c)	(c)	21	11	5	4	1	0	0	0
Houston	53	500	9	5	2	2	0	0	0	0
Humphreys	322	2,869	29	11	7	5	5	1	0	0
Jackson	(b)	(b)	6	3	2	0	1	0	0	0
Jefferson	965	9,151	51	13	4	15	14	5	0	0
Johnson	207	1,622	19	8	5	3	2	1	0	0
Knox	19,067	212,306	742	184	95	147	204	86	22	4
Lake	179	1,620	14	6	3	1	3	1	0	0
Lauderdale	279	1,887	23	12	2	4	3	2	0	0
Lawrence	747	6,396	48	13	7	16	9	3	0	0

TABLE 7.13 — ACCOMMODATION AND FOOD SERVICES EMPLOYEES AND PAYROLL, AND NUMBER OF ESTABLISHMENTS BY EMPLOYMENT-SIZE CLASS, COUNTIES, 2000 (Continued)

County	Number of employees <sup>1</sup>	Annual payroll (\$1,000)	Number of establishments by employment-size class							
			Total	1 to 4	5 to 9	10 to 19	20 to 49	50 to 99	100 to 249	250 or more
Lewis	209	1,743	15	3	4	4	3	1	0	0
Lincoln	452	3,874	43	16	12	5	10	0	0	0
Loudon	808	8,155	62	21	10	18	11	2	0	0
McMinn	1,316	11,524	80	26	5	17	29	3	0	0
McNairy	333	2,255	31	14	8	5	3	1	0	0
Macon	259	1,657	21	10	3	3	4	1	0	0
Madison	4,152	42,161	182	43	18	40	64	14	3	0
Marion	606	5,303	38	12	5	8	11	2	0	0
Marshall	460	3,647	33	13	3	6	10	1	0	0
Maury	1,934	17,475	91	22	10	23	28	7	1	0
Meigs	78	633	11	6	2	2	1	0	0	0
Monroe	946	9,362	58	18	7	15	15	3	0	0
Montgomery	4,730	43,645	235	67	39	45	60	18	6	0
Moore	(a)	(a)	5	3	1	1	0	0	0	0
Morgan	134	967	8	2	1	2	3	0	0	0
Obion	810	6,682	59	21	9	16	11	2	0	0
Overton	250	2,319	23	14	0	4	4	1	0	0
Perry	26	173	3	0	2	1	0	0	0	0
Pickett	42	344	7	4	2	0	1	0	0	0
Polk	(c)	(c)	17	8	4	3	2	0	0	0
Putnam	2,801	28,280	128	38	20	21	34	13	2	0
Rhea	595	5,261	49	21	7	10	10	1	0	0
Roane	916	8,960	55	19	6	15	12	2	1	0
Robertson	1,144	12,225	58	16	10	6	21	5	0	0
Rutherford	5,922	64,633	252	55	39	46	82	21	9	0
Scott	286	2,631	24	11	5	2	5	1	0	0
Sequatchie	(c)	(c)	17	7	2	2	6	0	0	0
Sevier	8,629	132,900	438	126	61	100	112	31	8	0
Shelby	35,745	409,490	1,505	378	207	292	451	136	37	4
Smith	308	2,264	19	8	2	3	5	1	0	0
Stewart	98	800	16	11	1	2	2	0	0	0
Sullivan	5,162	50,031	267	81	35	52	77	19	3	0
Sumner	2,034	21,755	137	53	24	19	36	3	2	0
Tipton	630	5,183	50	23	6	10	9	2	0	0
Trousdale	62	498	10	6	1	2	1	0	0	0
Unicoi	217	1,685	23	9	6	4	4	0	0	0
Union	169	1,300	10	4	1	2	2	1	0	0
Van Buren	(a)	(a)	1	1	0	0	0	0	0	0
Warren	704	6,340	54	23	6	13	9	3	0	0
Washington	4,983	48,709	199	39	29	41	58	25	7	0
Wayne	163	1,145	19	11	3	1	4	0	0	0
Weakley	726	4,974	50	18	7	14	9	1	1	0
White	383	3,730	25	9	4	4	7	1	0	0
Williamson	5,646	68,334	221	47	37	49	56	22	10	0
Wilson	2,154	24,540	137	50	21	25	32	7	2	0

Note: Data are based on the North American Industry Classification System (NAICS), unlike earlier County Business Patterns data, which were published according to the Standard Industrial Classification (SIC) system. As a result, 2000 data may not be directly comparable to previous years.

1. Number of employees for week including March 12.

a. 0 to 19 employees.      b. 20 to 99 employees.      c. 100 to 249 employees.

Source: U.S. Census Bureau, County Business Patterns 2000, Tennessee.

TABLE 7.14 — ADMINISTRATIVE AND SUPPORT AND WASTE MANAGEMENT AND REMEDIATION SERVICES EMPLOYEES AND PAYROLL, AND NUMBER OF ESTABLISHMENTS BY EMPLOYMENT-SIZE CLASS, COUNTIES, 2000

County	Number of employees <sup>1</sup>	Annual payroll (\$1,000)	Number of establishments by employment-size class							
			Total	1 to 4	5 to 9	10 to 19	20 to 49	50 to 99	100 to 249	250 or more
Anderson	4,121	139,127	91	49	10	6	8	7	7	4
Bedford	1,476	26,204	31	14	7	2	1	1	4	2
Benton	(b)	(b)	6	3	2	1	0	0	0	0
Bledsoe	(a)	(a)	3	2	1	0	0	0	0	0
Blount	1,273	22,364	90	48	18	12	6	4	1	1
Bradley	1,639	32,663	80	42	8	12	8	7	2	1
Campbell	77	1,286	9	5	2	0	2	0	0	0
Cannon	(a)	(a)	3	2	1	0	0	0	0	0
Carroll	279	6,376	10	7	1	0	1	0	1	0
Carter	746	8,695	29	16	5	2	3	1	1	1
Cheatham	310	6,729	31	22	4	3	1	0	1	0
Chester	39	526	8	7	0	0	1	0	0	0
Claiborne	115	1,226	11	5	0	4	2	0	0	0
Clay	(b)	(b)	2	0	1	1	0	0	0	0
Cocke	99	1,206	10	4	3	1	2	0	0	0
Coffee	2,381	60,999	51	27	5	7	5	3	1	3
Crockett	(c)	(c)	9	7	0	0	1	1	0	0
Cumberland	600	9,301	25	14	1	6	2	1	0	1
Davidson	34,935	809,043	1,148	526	175	160	134	61	68	24
Decatur	32	896	8	6	1	1	0	0	0	0
DeKalb	105	2,981	9	5	2	1	0	1	0	0
Dickson	1,118	15,129	35	19	4	1	5	3	1	2
Dyer	1,236	14,109	45	24	8	5	3	1	3	1
Fayette	59	1,079	18	14	2	2	0	0	0	0
Fentress	22	428	8	5	3	0	0	0	0	0
Franklin	87	2,923	21	14	4	3	0	0	0	0
Gibson	145	3,970	35	22	10	2	1	0	0	0
Giles	759	9,908	26	14	3	5	0	1	3	0
Grainger	(a)	(a)	5	4	1	0	0	0	0	0
Greene	624	11,558	48	28	8	5	4	1	2	0
Grundy	42	679	5	2	0	3	0	0	0	0
Hamblen	2,416	31,932	60	29	8	9	3	3	6	2
Hamilton	15,126	257,559	460	205	81	64	42	37	21	10
Hancock	(b)	(b)	3	2	0	0	0	1	0	0
Hardeman	(e)	(e)	9	6	1	0	0	0	0	2
Hardin	59	1,031	11	7	2	1	1	0	0	0
Hawkins	788	11,039	22	14	0	3	3	1	0	1
Haywood	80	1,521	13	9	3	0	0	1	0	0
Henderson	639	11,933	12	6	1	2	1	1	0	1
Henry	(c)	(c)	23	14	4	1	3	1	0	0
Hickman	24	387	11	10	1	0	0	0	0	0
Houston	(b)	(b)	2	1	0	0	0	1	0	0
Humphreys	(b)	(b)	8	6	1	1	0	0	0	0
Jackson	(b)	(b)	5	4	0	1	0	0	0	0
Jefferson	347	4,914	16	10	3	1	1	0	0	1
Johnson	4	70	4	4	0	0	0	0	0	0
Knox	14,595	272,939	589	285	104	78	56	34	19	13
Lake	0	0	0	0	0	0	0	0	0	0
Lauderdale	72	1,155	7	4	2	0	0	1	0	0
Lawrence	516	6,139	24	12	4	3	1	3	1	0

TABLE 7.14 — ADMINISTRATIVE AND SUPPORT AND WASTE MANAGEMENT AND REMEDIATION SERVICES EMPLOYEES AND PAYROLL, AND NUMBER OF ESTABLISHMENTS BY EMPLOYMENT-SIZE CLASS, COUNTIES, 2000 (Continued)

County	Number of employees <sup>1</sup>	Annual payroll (\$1,000)	Number of establishments by employment-size class							
			Total	1 to 4	5 to 9	10 to 19	20 to 49	50 to 99	100 to 249	250 or more
Lewis	26	575	7	4	3	0	0	0	0	0
Lincoln	72	2,026	20	15	3	2	0	0	0	0
Loudon	275	4,053	30	16	6	4	3	1	0	0
McMinn	577	9,883	25	8	9	3	3	0	2	0
McNairy	3,324	89,787	16	8	1	2	0	0	1	4
Macon	109	1,845	14	10	2	1	0	1	0	0
Madison	5,023	76,180	130	54	32	9	17	4	7	7
Marion	151	1,516	11	7	2	0	1	0	1	0
Marshall	697	9,852	17	10	1	1	0	2	2	1
Maury	1,407	28,072	65	33	13	6	4	6	2	1
Meigs	59	991	3	1	0	1	1	0	0	0
Monroe	141	2,412	16	8	5	1	1	1	0	0
Montgomery	1,795	26,505	106	62	17	10	7	5	4	1
Moore	(a)	(a)	1	0	1	0	0	0	0	0
Morgan	(a)	(a)	2	2	0	0	0	0	0	0
Obion	638	10,159	26	12	6	4	2	0	1	1
Overton	(b)	(b)	5	3	0	1	0	1	0	0
Perry	62	1,041	6	4	0	0	2	0	0	0
Pickett	0	0	0	0	0	0	0	0	0	0
Polk	40	632	10	9	0	0	1	0	0	0
Putnam	1,297	20,139	70	39	12	8	4	3	4	0
Rhea	280	3,007	14	12	0	1	0	0	0	1
Roane	195	5,282	16	10	2	1	2	1	0	0
Robertson	724	9,035	40	24	9	0	1	4	2	0
Rutherford	6,434	90,588	178	103	20	18	12	10	9	6
Scott	(b)	(b)	3	2	0	0	1	0	0	0
Sequatchie	6	101	4	4	0	0	0	0	0	0
Sevier	630	16,488	91	60	19	6	4	2	0	0
Shelby	49,913	1,026,881	1,211	543	206	147	135	62	78	40
Smith	196	3,682	9	6	1	0	1	0	1	0
Stewart	8	56	4	3	1	0	0	0	0	0
Sullivan	4,319	47,621	155	80	22	23	15	8	2	5
Sumner	3,265	50,718	139	84	24	13	3	6	6	3
Tipton	506	7,868	30	17	5	4	2	0	2	0
Trousdale	6	102	3	2	1	0	0	0	0	0
Unicoi	(e)	(e)	9	5	1	1	0	1	0	1
Union	17	276	4	3	0	1	0	0	0	0
Van Buren	(a)	(a)	1	1	0	0	0	0	0	0
Warren	833	8,881	30	18	3	1	5	2	0	1
Washington	5,079	75,747	121	63	12	16	12	5	8	5
Wayne	(d)	(d)	6	3	0	2	0	0	0	1
Weakley	713	12,662	15	10	2	0	2	0	0	1
White	41	586	12	8	2	2	0	0	0	0
Williamson	6,555	245,068	266	159	40	23	21	10	9	4
Wilson	2,008	34,802	116	68	27	7	7	2	3	2

Note: Data are based on the North American Industry Classification System (NAICS), unlike earlier County Business Patterns data, which were published according to the Standard Industrial Classification (SIC) system. As a result, 2000 data may not be directly comparable to previous years.

1. Number of employees for week including March 12.

a. 0 to 19 employees.      b. 20 to 99 employees.      c. 100 to 249 employees.

d. 250 to 499 employees.      e. 500 to 999 employees.

Source: U.S. Census Bureau, County Business Patterns 2000, Tennessee.

TABLE 7.15 — ARTS, ENTERTAINMENT, AND RECREATION EMPLOYEES AND PAYROLL, AND NUMBER OF ESTABLISHMENTS BY EMPLOYMENT-SIZE CLASS, COUNTIES, 2000

County	Number of employees <sup>1</sup>	Annual payroll (\$1,000)	Number of establishments by employment-size class							
			Total	1 to 4	5 to 9	10 to 19	20 to 49	50 to 99	100 to 249	250 or more
Anderson	204	2,764	22	12	6	1	1	2	0	0
Bedford	(b)	(b)	9	4	2	1	2	0	0	0
Benton	(a)	(a)	3	2	1	0	0	0	0	0
Bledsoe	(a)	(a)	1	0	1	0	0	0	0	0
Blount	177	2,948	29	18	5	3	3	0	0	0
Bradley	187	2,529	23	13	3	5	1	1	0	0
Campbell	54	780	9	5	3	0	1	0	0	0
Cannon	(a)	(a)	1	1	0	0	0	0	0	0
Carroll	16	162	5	4	0	1	0	0	0	0
Carter	90	1,032	7	3	0	2	2	0	0	0
Cheatham	139	3,079	11	6	1	1	2	1	0	0
Chester	0	0	0	0	0	0	0	0	0	0
Claiborne	41	585	10	5	4	1	0	0	0	0
Clay	24	542	4	2	1	1	0	0	0	0
Cocke	18	342	8	7	1	0	0	0	0	0
Coffee	127	1,513	14	6	3	3	2	0	0	0
Crockett	(a)	(a)	3	2	1	0	0	0	0	0
Cumberland	127	2,225	15	10	0	2	3	0	0	0
Davidson	5,604	353,127	569	333	93	83	41	9	10	0
Decatur	(a)	(a)	3	3	0	0	0	0	0	0
DeKalb	57	1,627	9	4	2	3	0	0	0	0
Dickson	65	988	8	3	3	1	1	0	0	0
Dyer	(b)	(b)	7	5	0	1	1	0	0	0
Fayette	13	285	4	2	2	0	0	0	0	0
Fentress	0	0	0	0	0	0	0	0	0	0
Franklin	44	684	11	8	2	1	0	0	0	0
Gibson	75	888	8	4	0	3	1	0	0	0
Giles	31	374	6	5	0	0	1	0	0	0
Grainger	23	320	5	3	1	1	0	0	0	0
Greene	(c)	(c)	14	6	2	5	1	0	0	0
Grundy	(a)	(a)	2	2	0	0	0	0	0	0
Hamblen	128	1,711	17	10	5	0	1	1	0	0
Hamilton	1,988	32,314	111	50	23	12	14	8	3	1
Hancock	0	0	0	0	0	0	0	0	0	0
Hardeman	(b)	(b)	5	2	2	1	0	0	0	0
Hardin	38	702	9	6	1	2	0	0	0	0
Hawkins	(b)	(b)	4	3	0	0	0	1	0	0
Haywood	54	359	4	2	0	0	2	0	0	0
Henderson	(b)	(b)	4	2	1	1	0	0	0	0
Henry	101	1,775	15	8	5	1	1	0	0	0
Hickman	8	157	3	3	0	0	0	0	0	0
Houston	0	0	0	0	0	0	0	0	0	0
Humphreys	(b)	(b)	7	3	3	1	0	0	0	0
Jackson	(a)	(a)	1	1	0	0	0	0	0	0
Jefferson	79	1,214	12	7	2	1	2	0	0	0
Johnson	(a)	(a)	2	0	1	1	0	0	0	0
Knox	2,027	30,870	148	83	20	14	20	8	3	0
Lake	(a)	(a)	2	1	1	0	0	0	0	0
Lauderdale	(b)	(b)	2	1	0	0	1	0	0	0
Lawrence	38	471	7	4	1	2	0	0	0	0

TABLE 7.15 — ARTS, ENTERTAINMENT, AND RECREATION EMPLOYEES AND PAYROLL, AND NUMBER OF ESTABLISHMENTS BY EMPLOYMENT-SIZE CLASS, COUNTIES, 2000 (Continued)

County	Number of employees <sup>1</sup>	Annual payroll (\$1,000)	Number of establishments by employment-size class							
			Total	1 to 4	5 to 9	10 to 19	20 to 49	50 to 99	100 to 249	250 or more
Lewis	(a)	(a)	3	3	0	0	0	0	0	0
Lincoln	(b)	(b)	5	4	0	1	0	0	0	0
Loudon	39	528	6	3	1	2	0	0	0	0
McMinn	83	1,103	13	6	4	2	1	0	0	0
McNairy	(b)	(b)	4	2	0	2	0	0	0	0
Macon	12	161	3	2	1	0	0	0	0	0
Madison	340	4,639	34	20	4	5	3	2	0	0
Marion	(a)	(a)	2	2	0	0	0	0	0	0
Marshall	(a)	(a)	3	2	1	0	0	0	0	0
Maury	114	3,199	19	9	6	3	1	0	0	0
Meigs	(a)	(a)	1	1	0	0	0	0	0	0
Monroe	(b)	(b)	2	1	0	0	1	0	0	0
Montgomery	287	3,633	30	14	7	5	2	2	0	0
Moore	0	0	0	0	0	0	0	0	0	0
Morgan	(b)	(b)	1	0	0	0	1	0	0	0
Obion	75	1,436	10	2	5	3	0	0	0	0
Overton	14	210	4	3	1	0	0	0	0	0
Perry	0	0	0	0	0	0	0	0	0	0
Pickett	(b)	(b)	3	2	0	0	1	0	0	0
Polk	54	2,181	14	9	5	0	0	0	0	0
Putnam	115	1,720	17	11	3	1	2	0	0	0
Rhea	32	393	7	5	1	1	0	0	0	0
Roane	68	1,225	15	10	3	1	1	0	0	0
Robertson	74	1,121	10	5	0	5	0	0	0	0
Rutherford	272	3,407	41	24	7	6	4	0	0	0
Scott	(a)	(a)	1	1	0	0	0	0	0	0
Sequatchie	(a)	(a)	1	0	0	1	0	0	0	0
Sevier	1,770	49,537	86	39	18	14	10	1	2	2
Shelby	4,310	79,463	183	76	29	22	31	15	8	2
Smith	(a)	(a)	3	1	2	0	0	0	0	0
Stewart	(a)	(a)	1	1	0	0	0	0	0	0
Sullivan	354	5,637	45	23	12	6	3	1	0	0
Sumner	343	8,996	53	41	6	3	1	1	1	0
Tipton	24	432	7	6	0	1	0	0	0	0
Trousdale	(a)	(a)	1	1	0	0	0	0	0	0
Unicoi	(a)	(a)	2	1	1	0	0	0	0	0
Union	(a)	(a)	2	0	2	0	0	0	0	0
Van Buren	0	0	0	0	0	0	0	0	0	0
Warren	52	946	7	4	1	1	1	0	0	0
Washington	324	4,915	31	18	4	3	5	1	0	0
Wayne	40	457	4	2	1	0	1	0	0	0
Weakley	(b)	(b)	7	4	3	0	0	0	0	0
White	42	315	6	5	0	0	1	0	0	0
Williamson	878	23,704	132	90	24	7	8	3	0	0
Wilson	410	8,166	36	18	3	7	6	2	0	0

Note: Data are based on the North American Industry Classification System (NAICS), unlike earlier County Business Patterns data, which were published according to the Standard Industrial Classification (SIC) system. As a result, 2000 data may not be directly comparable to previous years.

1. Number of employees for week including March 12.

a. 0 to 19 employees.      b. 20 to 99 employees.      c. 100 to 249 employees.

Source: U.S. Census Bureau, County Business Patterns 2000, Tennessee.

TABLE 7.16 — EDUCATIONAL SERVICES EMPLOYEES AND PAYROLL, AND NUMBER OF ESTABLISHMENTS BY EMPLOYMENT-SIZE CLASS, COUNTIES, 2000

County	Number of employees <sup>1</sup>	Annual payroll (\$1,000)	Number of establishments by employment-size class							
			Total	1 to 4	5 to 9	10 to 19	20 to 49	50 to 99	100 to 249	250 or more
Anderson	(b)	(b)	12	10	2	0	0	0	0	0
Bedford	(b)	(b)	3	2	0	0	0	1	0	0
Benton	(a)	(a)	1	0	1	0	0	0	0	0
Bledsoe	0	0	0	0	0	0	0	0	0	0
Blount	480	9,309	19	7	5	4	2	0	0	1
Bradley	(e)	(e)	8	2	3	0	1	1	0	1
Campbell	(a)	(a)	2	1	0	1	0	0	0	0
Cannon	(a)	(a)	1	0	0	1	0	0	0	0
Carroll	(d)	(d)	3	2	0	0	0	0	0	1
Carter	(e)	(e)	7	4	0	1	0	1	0	1
Cheatham	88	1,167	5	3	0	0	1	1	0	0
Chester	(e)	(e)	1	0	0	0	0	0	0	1
Claiborne	(d)	(d)	1	0	0	0	0	0	0	1
Clay	0	0	0	0	0	0	0	0	0	0
Cocke	(a)	(a)	1	0	1	0	0	0	0	0
Coffee	(a)	(a)	3	1	2	0	0	0	0	0
Crockett	(a)	(a)	1	1	0	0	0	0	0	0
Cumberland	(b)	(b)	6	5	0	0	0	1	0	0
Davidson	19,325	450,841	201	90	28	23	24	13	16	7
Decatur	0	0	0	0	0	0	0	0	0	0
DeKalb	0	0	0	0	0	0	0	0	0	0
Dickson	48	525	5	1	3	0	1	0	0	0
Dyer	(b)	(b)	3	1	1	0	1	0	0	0
Fayette	158	2,539	6	4	0	0	1	0	1	0
Fentress	(a)	(a)	1	1	0	0	0	0	0	0
Franklin	(e)	(e)	5	3	0	0	0	1	0	1
Gibson	27	295	3	0	2	1	0	0	0	0
Giles	(c)	(c)	2	0	1	0	0	0	1	0
Grainger	(b)	(b)	1	0	0	0	1	0	0	0
Greene	(d)	(d)	10	7	1	0	1	0	0	1
Grundy	(a)	(a)	1	1	0	0	0	0	0	0
Hamblen	(b)	(b)	4	3	0	0	1	0	0	0
Hamilton	3,517	65,244	89	34	18	12	11	5	6	3
Hancock	0	0	0	0	0	0	0	0	0	0
Hardeman	0	0	0	0	0	0	0	0	0	0
Hardin	(c)	(c)	1	0	0	0	0	0	1	0
Hawkins	0	0	0	0	0	0	0	0	0	0
Haywood	(a)	(a)	1	0	1	0	0	0	0	0
Henderson	(a)	(a)	3	2	1	0	0	0	0	0
Henry	(a)	(a)	2	2	0	0	0	0	0	0
Hickman	0	0	0	0	0	0	0	0	0	0
Houston	(a)	(a)	1	1	0	0	0	0	0	0
Humphreys	(a)	(a)	1	0	0	1	0	0	0	0
Jackson	0	0	0	0	0	0	0	0	0	0
Jefferson	(e)	(e)	7	3	1	1	1	0	0	1
Johnson	(a)	(a)	1	1	0	0	0	0	0	0
Knox	2,191	37,633	85	45	9	10	9	7	3	2
Lake	0	0	0	0	0	0	0	0	0	0
Lauderdale	0	0	0	0	0	0	0	0	0	0
Lawrence	56	378	3	0	1	0	2	0	0	0



TABLE 7.16 — EDUCATIONAL SERVICES EMPLOYEES AND PAYROLL, AND NUMBER OF ESTABLISHMENTS BY EMPLOYMENT-SIZE CLASS, COUNTIES, 2000 (Continued)

County	Number of employees <sup>1</sup>	Annual payroll (\$1,000)	Number of establishments by employment-size class							
			Total	1 to 4	5 to 9	10 to 19	20 to 49	50 to 99	100 to 249	250 or more
Lewis	(a)	(a)	2	2	0	0	0	0	0	0
Lincoln	(a)	(a)	5	5	0	0	0	0	0	0
Loudon	3	75	3	3	0	0	0	0	0	0
McMinn	(c)	(c)	6	5	0	0	0	1	0	0
McNairy	0	0	0	0	0	0	0	0	0	0
Macon	0	0	0	0	0	0	0	0	0	0
Madison	1,289	29,077	18	5	4	2	2	1	2	2
Marion	0	0	0	0	0	0	0	0	0	0
Marshall	0	0	0	0	0	0	0	0	0	0
Maury	(d)	(d)	6	3	1	0	0	0	2	0
Meigs	(a)	(a)	2	1	1	0	0	0	0	0
Monroe	(b)	(b)	1	0	0	0	0	1	0	0
Montgomery	277	4,203	17	7	2	3	3	2	0	0
Moore	0	0	0	0	0	0	0	0	0	0
Morgan	(b)	(b)	2	1	0	0	1	0	0	0
Obion	0	0	0	0	0	0	0	0	0	0
Overton	(a)	(a)	1	1	0	0	0	0	0	0
Perry	0	0	0	0	0	0	0	0	0	0
Pickett	0	0	0	0	0	0	0	0	0	0
Polk	(a)	(a)	3	2	1	0	0	0	0	0
Putnam	59	457	8	4	1	3	0	0	0	0
Rhea	(d)	(d)	6	4	0	1	0	0	0	1
Roane	22	289	3	1	1	1	0	0	0	0
Robertson	127	1,508	6	3	0	0	2	1	0	0
Rutherford	261	4,501	27	18	3	3	2	0	1	0
Scott	0	0	0	0	0	0	0	0	0	0
Sequatchie	0	0	0	0	0	0	0	0	0	0
Sevier	153	2,018	8	2	2	1	2	1	0	0
Shelby	6,644	152,092	197	77	30	29	26	17	15	3
Smith	0	0	0	0	0	0	0	0	0	0
Stewart	0	0	0	0	0	0	0	0	0	0
Sullivan	661	7,346	16	9	2	2	1	0	1	1
Sumner	234	2,948	14	6	1	5	0	2	0	0
Tipton	(a)	(a)	2	2	0	0	0	0	0	0
Trousdale	(a)	(a)	1	0	1	0	0	0	0	0
Unicoi	0	0	0	0	0	0	0	0	0	0
Union	0	0	0	0	0	0	0	0	0	0
Van Buren	0	0	0	0	0	0	0	0	0	0
Warren	43	480	6	5	0	0	1	0	0	0
Washington	166	3,008	15	6	4	1	4	0	0	0
Wayne	0	0	0	0	0	0	0	0	0	0
Weakley	(a)	(a)	2	2	0	0	0	0	0	0
White	9	105	3	2	1	0	0	0	0	0
Williamson	578	13,576	42	20	8	8	3	2	1	0
Wilson	355	8,021	13	7	3	0	1	1	1	0

Note: Data are based on the North American Industry Classification System (NAICS), unlike earlier County Business Patterns data, which were published according to the Standard Industrial Classification (SIC) system. As a result, 2000 data may not be directly comparable to previous years.

1. Number of employees for week including March 12.

- a. 0 to 19 employees.      b. 20 to 99 employees.      c. 100 to 249 employees.  
d. 250 to 499 employees.      e. 500 to 999 employees.

Source: U.S. Census Bureau, County Business Patterns 2000, Tennessee.

TABLE 7.17 — HEALTH CARE AND SOCIAL ASSISTANCE EMPLOYEES AND PAYROLL, AND NUMBER OF ESTABLISHMENTS BY EMPLOYMENT-SIZE CLASS, COUNTIES, 2000

County	Number of employees <sup>1</sup>	Annual payroll (\$1,000)	Number of establishments by employment-size class							
			Total	1 to 4	5 to 9	10 to 19	20 to 49	50 to 99	100 to 249	250 or more
Anderson	3,740	107,351	183	83	45	28	16	6	4	1
Bedford	1,067	18,058	77	31	24	14	6	0	1	1
Benton	465	8,502	26	11	9	2	1	2	1	0
Bledsoe	91	1,831	19	13	3	3	0	0	0	0
Blount	3,931	108,473	191	80	62	29	12	2	4	2
Bradley	6,016	137,717	195	72	44	36	18	9	13	3
Campbell	1,257	27,867	51	24	12	8	2	1	2	2
Cannon	270	7,286	11	6	1	2	0	1	1	0
Carroll	916	19,720	57	31	15	5	0	2	4	0
Carter	1,298	30,301	82	43	15	12	6	4	1	1
Cheatham	426	7,571	32	14	8	6	2	1	1	0
Chester	332	6,885	19	6	4	3	5	0	1	0
Claiborne	845	20,501	35	16	7	6	2	2	1	1
Clay	320	6,790	14	7	2	2	1	1	1	0
Cocke	808	20,438	41	16	11	7	4	1	2	0
Coffee	2,035	55,638	154	79	43	19	8	1	3	1
Crockett	356	7,045	20	8	6	4	0	0	2	0
Cumberland	1,923	47,828	101	53	28	9	5	2	3	1
Davidson	50,997	1,918,372	1,663	758	353	252	169	58	49	24
Decatur	786	14,974	17	6	1	3	0	3	4	0
DeKalb	461	10,943	37	23	4	5	3	1	1	0
Dickson	1,479	31,212	66	27	15	15	5	1	2	1
Dyer	1,444	38,365	101	45	26	16	9	3	1	1
Fayette	481	9,120	32	15	7	6	1	1	2	0
Fentress	831	17,328	28	11	9	2	2	1	2	1
Franklin	1,159	26,871	73	31	21	10	5	3	2	1
Gibson	1,703	31,239	110	52	27	17	4	5	5	0
Giles	806	17,440	58	27	16	8	3	2	2	0
Grainger	176	2,841	12	8	2	0	1	0	1	0
Greene	2,542	57,493	129	64	32	19	4	2	6	2
Grundy	266	3,464	18	8	4	3	2	0	1	0
Hamblen	3,374	83,364	156	69	38	24	14	5	3	3
Hamilton	19,542	688,431	896	428	211	117	88	20	23	9
Hancock	97	1,656	7	1	3	2	1	0	0	0
Hardeman	1,272	29,865	38	12	10	6	5	2	2	1
Hardin	717	13,243	35	15	12	3	2	1	1	1
Hawkins	822	14,513	53	22	14	10	3	0	4	0
Haywood	360	8,379	29	16	8	3	0	0	2	0
Henderson	534	11,685	38	22	6	5	2	1	2	0
Henry	1,269	33,160	71	32	18	12	5	0	3	1
Hickman	414	8,130	31	13	10	5	1	0	2	0
Houston	296	6,782	13	4	4	3	0	1	1	0
Humphreys	413	8,694	27	10	9	3	3	1	1	0
Jackson	163	2,575	6	1	2	2	0	0	1	0
Jefferson	804	17,784	49	24	11	7	4	0	3	0
Johnson	162	3,843	17	7	7	2	0	1	0	0
Knox	28,250	946,973	1,098	467	275	163	129	32	21	11
Lake	116	2,335	6	3	1	1	0	1	0	0
Lauderdale	496	10,507	23	10	6	3	1	1	2	0
Lawrence	878	19,384	78	43	20	7	5	1	2	0

TABLE 7.17 — HEALTH CARE AND SOCIAL ASSISTANCE EMPLOYEES AND PAYROLL, AND NUMBER OF ESTABLISHMENTS BY EMPLOYMENT-SIZE CLASS, COUNTIES, 2000  
(Continued)

County	Number of employees <sup>1</sup>	Annual payroll (\$1,000)	Number of establishments by employment-size class							
			Total	1 to 4	5 to 9	10 to 19	20 to 49	50 to 99	100 to 249	250 or more
Lewis	377	5,981	21	6	6	4	3	1	1	0
Lincoln	776	16,353	61	37	14	5	1	3	0	1
Loudon	967	22,079	65	29	19	11	1	2	3	0
McMinn	1,723	39,647	99	34	37	17	4	4	1	2
McNairy	660	12,026	32	14	9	5	1	0	3	0
Macon	474	8,304	29	14	6	5	2	0	2	0
Madison	8,011	277,451	254	90	68	43	32	12	5	4
Marion	585	12,581	41	19	12	8	0	0	2	0
Marshall	610	11,728	53	26	13	8	3	2	1	0
Maury	3,996	112,440	169	72	53	20	14	5	4	1
Meigs	120	1,876	5	1	2	0	1	1	0	0
Monroe	960	18,112	51	29	11	5	2	2	1	1
Montgomery	3,581	94,375	206	78	56	36	25	8	2	1
Moore	101	1,636	11	9	1	0	0	1	0	0
Morgan	264	4,588	13	6	3	0	3	0	1	0
Obion	1,077	25,118	73	38	21	9	2	0	2	1
Overton	597	14,397	32	18	3	7	2	0	2	0
Perry	381	7,732	16	2	8	2	2	1	1	0
Pickett	(a)	(a)	4	1	1	0	1	1	0	0
Polk	302	6,433	20	12	5	1	0	0	2	0
Putnam	2,967	85,407	158	70	38	27	16	2	4	1
Rhea	581	12,101	46	20	17	5	3	0	1	0
Roane	1,506	31,327	81	41	22	7	5	2	3	1
Robertson	1,359	31,382	80	42	21	11	1	1	3	1
Rutherford	7,064	234,204	315	138	80	45	27	16	6	3
Scott	576	15,158	38	14	11	6	5	1	1	0
Sequatchie	304	4,693	16	6	4	3	1	1	1	0
Sevier	1,428	31,568	101	47	29	15	4	4	1	1
Shelby	55,148	1,791,079	2,102	960	460	318	238	48	48	30
Smith	667	17,563	35	18	8	3	2	1	3	0
Stewart	180	3,554	19	9	6	3	0	1	0	0
Sullivan	9,824	343,969	401	150	91	90	45	13	9	3
Sumner	3,848	100,745	244	104	63	46	20	4	4	3
Tipton	1,044	23,995	65	31	19	8	2	3	1	1
Trousdale	214	3,999	15	8	4	0	2	0	1	0
Unicoi	493	10,116	28	13	10	2	1	0	2	0
Union	122	2,275	12	6	4	1	0	1	0	0
Van Buren	83	1,364	6	4	1	0	0	1	0	0
Warren	1,073	26,276	85	46	24	10	2	0	2	1
Washington	8,676	293,040	291	123	70	45	30	11	10	2
Wayne	281	4,587	29	9	11	4	5	0	0	0
Weakley	1,716	35,201	59	18	17	8	8	2	4	2
White	566	11,652	38	23	7	2	3	1	2	0
Williamson	8,719	286,092	485	190	121	75	65	18	14	2
Wilson	1,876	54,057	192	99	41	29	17	4	2	0

Note: Data are based on the North American Industry Classification System (NAICS), unlike earlier County Business Patterns data, which were published according to the Standard Industrial Classification (SIC) system. As a result, 2000 data may not be directly comparable to previous years.

1. Number of employees for week including March 12.

a. 20 to 99 employees.

Source: U.S. Census Bureau, County Business Patterns 2000, Tennessee.

TABLE 7.18 — INFORMATION EMPLOYEES AND PAYROLL, AND NUMBER OF ESTABLISHMENTS BY EMPLOYMENT-SIZE CLASS, COUNTIES, 2000

County	Number of employees <sup>1</sup>	Annual payroll (\$1,000)	Number of establishments by employment-size class							
			Total	1 to 4	5 to 9	10 to 19	20 to 49	50 to 99	100 to 249	250 or more
Anderson	494	12,384	33	15	11	1	3	2	1	0
Bedford	181	6,948	9	1	3	2	2	1	0	0
Benton	(b)	(b)	4	2	1	1	0	0	0	0
Bledsoe	(b)	(b)	3	2	0	0	0	1	0	0
Blount	564	16,940	20	11	1	1	1	5	1	0
Bradley	521	11,786	20	5	5	3	4	2	1	0
Campbell	97	2,403	14	8	3	1	2	0	0	0
Cannon	22	453	5	2	3	0	0	0	0	0
Carroll	226	5,691	12	4	3	1	3	1	0	0
Carter	116	2,573	7	3	1	2	0	1	0	0
Cheatham	43	1,201	6	4	1	0	1	0	0	0
Chester	44	711	6	4	1	0	1	0	0	0
Claiborne	36	1,026	7	5	1	1	0	0	0	0
Clay	(a)	(a)	2	1	1	0	0	0	0	0
Cocke	113	2,341	9	3	1	4	0	1	0	0
Coffee	276	5,599	21	9	5	3	3	1	0	0
Crockett	(a)	(a)	2	0	1	1	0	0	0	0
Cumberland	297	10,007	15	4	4	4	2	0	1	0
Davidson	16,712	758,871	643	345	98	81	68	28	15	8
Decatur	101	3,209	7	2	3	0	2	0	0	0
DeKalb	(c)	(c)	6	2	2	0	1	1	0	0
Dickson	231	7,330	12	5	4	0	1	2	0	0
Dyer	186	4,596	13	4	2	2	5	0	0	0
Fayette	51	1,461	6	2	1	3	0	0	0	0
Fentress	20	365	4	2	1	1	0	0	0	0
Franklin	75	1,894	11	6	2	2	1	0	0	0
Gibson	189	5,544	28	14	6	6	2	0	0	0
Giles	94	2,384	11	5	1	4	1	0	0	0
Grainger	(a)	(a)	1	0	1	0	0	0	0	0
Greene	335	11,035	17	5	3	4	3	2	0	0
Grundy	52	1,053	7	2	3	2	0	0	0	0
Hamblen	250	6,152	13	7	1	2	2	0	1	0
Hamilton	3,135	103,690	145	61	20	28	22	8	5	1
Hancock	(a)	(a)	1	1	0	0	0	0	0	0
Hardeman	75	1,479	8	4	0	3	1	0	0	0
Hardin	83	1,473	8	3	3	1	1	0	0	0
Hawkins	96	1,935	11	3	5	2	1	0	0	0
Haywood	76	1,789	8	4	1	1	2	0	0	0
Henderson	68	1,470	8	3	2	3	0	0	0	0
Henry	91	1,986	9	4	0	4	1	0	0	0
Hickman	17	572	5	4	1	0	0	0	0	0
Houston	(a)	(a)	1	0	0	1	0	0	0	0
Humphreys	35	705	6	3	2	1	0	0	0	0
Jackson	(c)	(c)	2	1	0	0	0	0	1	0
Jefferson	43	844	7	4	2	0	1	0	0	0
Johnson	33	763	7	3	4	0	0	0	0	0
Knox	5,178	192,959	233	113	36	32	33	5	10	4
Lake	(a)	(a)	1	0	1	0	0	0	0	0
Lauderdale	151	4,672	7	3	1	2	0	0	1	0
Lawrence	131	2,973	11	3	3	3	2	0	0	0

TABLE 7.18 — INFORMATION EMPLOYEES AND PAYROLL, AND NUMBER OF ESTABLISHMENTS BY EMPLOYMENT-SIZE CLASS, COUNTIES, 2000 (Continued)

County	Number of employees <sup>1</sup>	Annual payroll (\$1,000)	Number of establishments by employment-size class							
			Total	1 to 4	5 to 9	10 to 19	20 to 49	50 to 99	100 to 249	250 or more
Lewis	22	493	3	0	2	1	0	0	0	0
Lincoln	124	2,665	13	4	2	5	2	0	0	0
Loudon	67	1,609	12	7	3	1	1	0	0	0
McMinn	181	4,214	12	4	5	1	1	1	0	0
McNairy	38	1,219	7	4	1	2	0	0	0	0
Macon	(c)	(c)	5	2	1	1	0	1	0	0
Madison	843	24,349	37	15	4	5	9	3	1	0
Marion	52	1,299	5	2	1	1	1	0	0	0
Marshall	75	2,640	8	4	3	0	1	0	0	0
Maurry	948	33,518	29	14	5	2	1	5	1	1
Meigs	0	0	0	0	0	0	0	0	0	0
Monroe	85	2,009	9	4	3	1	1	0	0	0
Montgomery	657	17,178	31	17	3	3	4	3	1	0
Moore	(a)	(a)	1	1	0	0	0	0	0	0
Morgan	119	5,751	5	0	2	1	1	1	0	0
Obion	98	2,317	9	4	0	4	1	0	0	0
Overton	45	501	6	2	2	2	0	0	0	0
Perry	(a)	(a)	1	0	1	0	0	0	0	0
Pickett	(a)	(a)	1	1	0	0	0	0	0	0
Polk	36	722	7	2	5	0	0	0	0	0
Putnam	362	10,408	24	12	2	2	7	1	0	0
Rhea	61	1,615	11	7	2	2	0	0	0	0
Roane	101	2,103	11	8	1	0	1	1	0	0
Robertson	56	1,366	9	5	2	1	1	0	0	0
Rutherford	702	19,340	33	12	4	7	5	4	1	0
Scott	29	283	3	1	1	1	0	0	0	0
Sequatchie	(a)	(a)	2	1	1	0	0	0	0	0
Sevier	405	8,672	27	11	7	4	3	1	1	0
Shelby	9,542	351,059	328	146	54	46	41	22	12	7
Smith	26	483	5	3	1	1	0	0	0	0
Stewart	(a)	(a)	1	1	0	0	0	0	0	0
Sullivan	1,254	48,468	68	31	13	9	8	4	3	0
Sumner	478	11,437	30	15	6	3	4	1	1	0
Tipton	55	1,460	6	3	1	1	1	0	0	0
Trousdale										
Unicoi	(b)	(b)	4	1	1	2	0	0	0	0
Union	(a)	(a)	2	2	0	0	0	0	0	0
Van Buren										
Warren	224	6,679	13	5	4	2	0	1	1	0
Washington	1,160	39,812	44	20	3	8	6	5	1	1
Wayne	(b)	(b)	4	2	1	1	0	0	0	0
Weakley	103	2,612	11	5	2	2	2	0	0	0
White	505	2,584	5	2	0	0	2	0	0	1
Williamson	2,343	104,755	138	77	20	15	15	6	3	2
Wilson	221	6,221	30	20	3	3	4	0	0	0

Note: Data are based on the North American Industry Classification System (NAICS), unlike earlier County Business Patterns data, which were published according to the Standard Industrial Classification (SIC) system. As a result, 2000 data may not be directly comparable to previous years.

1. Number of employees for week including March 12.

a. 0 to 19 employees.      b. 20 to 99 employees.      c. 100 to 249 employees.

Source: U.S. Census Bureau, County Business Patterns 2000, Tennessee.

TABLE 7.19 — MANAGEMENT OF COMPANIES AND ENTERPRISES SECTOR EMPLOYEES AND PAYROLL, AND NUMBER OF ESTABLISHMENTS BY EMPLOYMENT-SIZE CLASS, COUNTIES, 2000

County	Number of employees <sup>1</sup>	Annual payroll (\$1,000)	Number of establishments by employment-size class							
			Total	1 to 4	5 to 9	10 to 19	20 to 49	50 to 99	100 to 249	250 or more
Anderson	146	30,737	11	4	4	0	2	1	0	0
Bedford	(b)	(b)	2	1	0	0	1	0	0	0
Benton	0	0	0	0	0	0	0	0	0	0
Bledsoe	0	0	0	0	0	0	0	0	0	0
Blount	1,041	77,811	22	4	9	2	2	2	2	1
Bradley	1,107	67,671	19	5	4	4	4	0	1	1
Campbell	(a)	(a)	2	1	0	1	0	0	0	0
Cannon	0	0	0	0	0	0	0	0	0	0
Carroll	(a)	(a)	1	1	0	0	0	0	0	0
Carter	(a)	(a)	2	1	1	0	0	0	0	0
Cheatham	(a)	(a)	1	1	0	0	0	0	0	0
Chester	0	0	0	0	0	0	0	0	0	0
Claiborne	129	3,348	5	2	1	0	1	1	0	0
Clay	0	0	0	0	0	0	0	0	0	0
Cocke	(a)	(a)	2	0	1	1	0	0	0	0
Coffee	246	8,625	7	3	0	2	0	1	1	0
Crockett	(c)	(c)	2	1	0	0	0	0	1	0
Cumberland	(b)	(b)	1	0	0	0	1	0	0	0
Davidson	12,862	969,914	212	81	22	30	24	24	21	10
Decatur	(b)	(b)	1	0	0	0	0	1	0	0
DeKalb	(a)	(a)	1	1	0	0	0	0	0	0
Dickson	(b)	(b)	2	0	1	1	0	0	0	0
Dyer	(b)	(b)	3	2	0	1	0	0	0	0
Fayette	162	15,946	3	0	0	1	1	0	1	0
Fentress	(b)	(b)	2	1	0	0	1	0	0	0
Franklin	0	0	0	0	0	0	0	0	0	0
Gibson	(b)	(b)	5	3	1	0	0	1	0	0
Giles	(a)	(a)	1	1	0	0	0	0	0	0
Grainger	(a)	(a)	1	0	0	1	0	0	0	0
Greene	76	4,363	4	0	1	1	2	0	0	0
Grundy	(a)	(a)	1	1	0	0	0	0	0	0
Hamblen	59	1,294	5	3	0	1	1	0	0	0
Hamilton	2,144	83,831	57	24	10	7	8	4	2	2
Hancock	(a)	(a)	1	1	0	0	0	0	0	0
Hardeman	0	0	0	0	0	0	0	0	0	0
Hardin	(b)	(b)	4	2	1	0	1	0	0	0
Hawkins	63	3,841	3	0	1	0	2	0	0	0
Haywood	(a)	(a)	1	1	0	0	0	0	0	0
Henderson	(a)	(a)	1	0	0	1	0	0	0	0
Henry	(b)	(b)	3	1	0	0	1	1	0	0
Hickman	0	0	0	0	0	0	0	0	0	0
Houston	0	0	0	0	0	0	0	0	0	0
Humphreys	0	0	0	0	0	0	0	0	0	0
Jackson	0	0	0	0	0	0	0	0	0	0
Jefferson	(b)	(b)	1	0	0	0	0	1	0	0
Johnson	0	0	0	0	0	0	0	0	0	0
Knox	6,772	310,292	87	24	6	13	17	12	4	11
Lake	0	0	0	0	0	0	0	0	0	0
Lauderdale	(a)	(a)	2	2	0	0	0	0	0	0
Lawrence	(b)	(b)	4	2	0	2	0	0	0	0

TABLE 7.19 — MANAGEMENT OF COMPANIES AND ENTERPRISES SECTOR EMPLOYEES AND PAYROLL, AND NUMBER OF ESTABLISHMENTS BY EMPLOYMENT-SIZE CLASS, COUNTIES, 2000 (Continued)

County	Number of employees <sup>1</sup>	Annual payroll (\$1,000)	Total	Number of establishments by employment-size class						
				1 to 4	5 to 9	10 to 19	20 to 49	50 to 99	100 to 249	250 or more
Lewis	0	0	0	0	0	0	0	0	0	0
Lincoln	(b)	(b)	1	0	0	0	0	1	0	0
Loudon	(a)	(a)	1	0	1	0	0	0	0	0
McMinn	(b)	(b)	2	0	0	1	0	1	0	0
McNairy	(a)	(a)	1	1	0	0	0	0	0	0
Macon	0	0	0	0	0	0	0	0	0	0
Madison	327	13,568	13	7	2	1	1	1	1	0
Marion	(b)	(b)	5	4	0	1	0	0	0	0
Marshall	(a)	(a)	2	2	0	0	0	0	0	0
Maury	146	5,767	6	1	1	2	1	1	0	0
Meigs	0	0	0	0	0	0	0	0	0	0
Monroe	(b)	(b)	2	0	0	1	1	0	0	0
Montgomery	78	5,979	6	2	2	1	1	0	0	0
Moore	0	0	0	0	0	0	0	0	0	0
Morgan	0	0	0	0	0	0	0	0	0	0
Obion	91	4,178	4	2	0	0	1	1	0	0
Overton	0	0	0	0	0	0	0	0	0	0
Perry	0	0	0	0	0	0	0	0	0	0
Pickett	0	0	0	0	0	0	0	0	0	0
Polk	(c)	(c)	1	0	0	0	0	0	1	0
Putnam	657	26,134	7	2	0	2	1	1	0	1
Rhea	(a)	(a)	1	1	0	0	0	0	0	0
Roane	25	979	4	2	1	1	0	0	0	0
Robertson	(b)	(b)	1	0	0	0	0	1	0	0
Rutherford	522	38,917	19	5	3	4	5	0	2	0
Scott	(a)	(a)	2	1	1	0	0	0	0	0
Sequatchie	(a)	(a)	1	0	1	0	0	0	0	0
Sevier	(b)	(b)	3	1	1	1	0	0	0	0
Shelby	40,513	2,207,509	364	91	51	55	73	36	35	23
Smith	(a)	(a)	1	1	0	0	0	0	0	0
Stewart	0	0	0	0	0	0	0	0	0	0
Sullivan	399	24,243	20	7	4	4	4	0	1	0
Sumner	347	10,181	9	5	2	0	1	0	0	1
Tipton	(a)	(a)	2	2	0	0	0	0	0	0
Trousdale	(a)	(a)	2	1	0	1	0	0	0	0
Unicoi	0	0	0	0	0	0	0	0	0	0
Union	0	0	0	0	0	0	0	0	0	0
Van Buren	0	0	0	0	0	0	0	0	0	0
Warren	5	144	3	3	0	0	0	0	0	0
Washington	600	30,326	20	5	2	3	6	4	0	0
Wayne	0	0	0	0	0	0	0	0	0	0
Weakley	0	0	0	0	0	0	0	0	0	0
White	(a)	(a)	2	2	0	0	0	0	0	0
Williamson	3,088	214,475	57	14	11	7	11	6	7	1
Wilson	(d)	(d)	8	4	2	0	0	1	0	1

Note: Data are based on the North American Industry Classification System (NAICS), unlike earlier County Business Patterns data, which were published according to the Standard Industrial Classification (SIC) system. As a result, 2000 data may not be directly comparable to previous years.

1. Number of employees for week including March 12.

a. 0 to 19 employees. c. 100 to 249 employees.

b. 20 to 99 employees. d. 500 to 999 employees.

Source: U.S. Census Bureau, County Business Patterns 2000, Tennessee.

TABLE 7.20 — PROFESSIONAL, SCIENTIFIC, AND TECHNICAL SERVICES EMPLOYEES AND PAYROLL, AND NUMBER OF ESTABLISHMENTS BY EMPLOYMENT-SIZE CLASS, COUNTIES, 2000

County	Number of employees <sup>1</sup>	Annual payroll (\$1,000)	Number of establishments by employment-size class							
			Total	1 to 4	5 to 9	10 to 19	20 to 49	50 to 99	100 to 249	250 or more
Anderson	9,408	729,547	197	103	29	27	16	11	5	6
Bedford	143	3,187	32	21	8	2	1	0	0	0
Benton	(b)	(b)	10	5	5	0	0	0	0	0
Bledsoe	(a)	(a)	12	11	1	0	0	0	0	0
Blount	1,023	26,172	145	102	22	14	3	2	2	0
Bradley	767	19,733	134	84	29	15	5	1	0	0
Campbell	104	2,170	29	21	4	4	0	0	0	0
Cannon	50	432	7	5	0	1	1	0	0	0
Carroll	87	1,613	22	11	11	0	0	0	0	0
Carter	121	2,346	38	29	7	2	0	0	0	0
Cheatham	177	10,219	31	25	4	1	0	1	0	0
Chester	76	969	9	5	2	1	1	0	0	0
Claiborne	84	1,338	24	18	5	1	0	0	0	0
Clay	(a)	(a)	4	3	1	0	0	0	0	0
Cocke	69	1,175	29	27	2	0	0	0	0	0
Coffee	2,118	105,547	67	40	18	3	3	0	2	1
Crockett	28	1,096	13	10	3	0	0	0	0	0
Cumberland	272	5,794	50	32	12	3	3	0	0	0
Davidson	19,217	904,019	1,767	1,093	277	196	130	36	30	5
Decatur	58	995	14	11	2	0	1	0	0	0
DeKalb	68	1,055	18	13	5	0	0	0	0	0
Dickson	137	4,329	45	38	4	3	0	0	0	0
Dyer	246	3,890	51	37	8	4	1	1	0	0
Fayette	75	1,095	30	27	1	2	0	0	0	0
Fentress	(b)	(b)	14	10	3	1	0	0	0	0
Franklin	126	2,477	35	27	3	5	0	0	0	0
Gibson	210	3,690	49	31	12	6	0	0	0	0
Giles	246	7,504	35	26	3	5	0	0	1	0
Grainger	(b)	(b)	11	8	2	1	0	0	0	0
Greene	311	7,272	59	44	9	3	2	1	0	0
Grundy	9	100	5	5	0	0	0	0	0	0
Hamblen	257	8,075	71	54	13	3	1	0	0	0
Hamilton	7,173	273,243	725	441	138	73	46	18	6	3
Hancock	4	30	3	3	0	0	0	0	0	0
Hardeman	(b)	(b)	14	10	4	0	0	0	0	0
Hardin	122	1,846	30	19	8	2	1	0	0	0
Hawkins	78	1,565	25	19	4	2	0	0	0	0
Haywood	50	1,254	16	11	5	0	0	0	0	0
Henderson	97	1,071	24	19	3	1	1	0	0	0
Henry	239	6,034	37	20	10	6	1	0	0	0
Hickman	(b)	(b)	13	11	2	0	0	0	0	0
Houston	(a)	(a)	3	3	0	0	0	0	0	0
Humphreys	58	1,416	11	6	3	2	0	0	0	0
Jackson	10	144	6	6	0	0	0	0	0	0
Jefferson	223	4,616	42	34	4	3	0	1	0	0
Johnson	(b)	(b)	8	7	0	1	0	0	0	0
Knox	10,516	410,482	1,086	665	177	127	89	15	10	3
Lake	11	100	4	4	0	0	0	0	0	0
Lauderdale	(b)	(b)	17	15	1	1	0	0	0	0
Lawrence	146	2,480	43	33	8	1	1	0	0	0



TABLE 7.20 — PROFESSIONAL, SCIENTIFIC, AND TECHNICAL SERVICES EMPLOYEES AND PAYROLL, AND NUMBER OF ESTABLISHMENTS BY EMPLOYMENT-SIZE CLASS, COUNTIES, 2000 (Continued)

County	Number of employees <sup>1</sup>	Annual payroll (\$1,000)	Number of establishments by employment-size class							
			Total	1 to 4	5 to 9	10 to 19	20 to 49	50 to 99	100 to 249	250 or more
Lewis	(b)	(b)	12	9	2	1	0	0	0	0
Lincoln	164	4,114	39	31	6	0	2	0	0	0
Loudon	187	4,007	49	40	4	2	3	0	0	0
McMinn	222	4,472	50	34	10	4	2	0	0	0
McNairy	37	795	14	12	2	0	0	0	0	0
Macon	54	895	18	13	4	1	0	0	0	0
Madison	1,115	35,721	156	97	28	17	11	2	1	0
Marion	123	2,876	26	19	5	1	1	0	0	0
Marshall	103	2,126	25	17	5	3	0	0	0	0
Maury	750	29,043	94	61	16	13	2	1	1	0
Meigs	(b)	(b)	7	6	0	1	0	0	0	0
Monroe	177	2,945	33	26	4	2	0	1	0	0
Montgomery	1,025	19,111	133	85	22	19	5	0	2	0
Moore	(a)	(a)	1	1	0	0	0	0	0	0
Morgan	(a)	(a)	7	7	0	0	0	0	0	0
Obion	118	2,521	31	24	6	0	1	0	0	0
Overton	61	1,367	19	17	0	2	0	0	0	0
Perry	10	76	5	4	1	0	0	0	0	0
Pickett	5	56	3	3	0	0	0	0	0	0
Polk	(b)	(b)	6	4	2	0	0	0	0	0
Putnam	775	19,304	134	90	26	10	6	1	1	0
Rhea	81	1,135	22	16	4	2	0	0	0	0
Roane	149	5,162	41	30	6	5	0	0	0	0
Robertson	289	5,978	59	44	9	3	3	0	0	0
Rutherford	1,523	43,862	239	162	39	25	9	2	2	0
Scott	(b)	(b)	17	15	0	2	0	0	0	0
Sequatchie	27	587	9	7	2	0	0	0	0	0
Sevier	463	11,777	111	82	22	5	1	1	0	0
Shelby	21,468	817,705	1,873	1,146	295	211	143	45	22	11
Smith	37	568	12	10	0	2	0	0	0	0
Stewart	10	96	4	4	0	0	0	0	0	0
Sullivan	1,431	49,609	247	159	55	20	10	2	1	0
Sumner	972	27,343	190	149	23	13	3	1	0	1
Tipton	162	3,517	36	28	4	3	1	0	0	0
Trousdale	31	884	6	3	1	2	0	0	0	0
Unicoi	19	228	11	9	2	0	0	0	0	0
Union	22	153	7	6	0	1	0	0	0	0
Van Buren	(a)	(a)	4	4	0	0	0	0	0	0
Warren	125	2,413	41	30	8	3	0	0	0	0
Washington	1,483	37,689	213	131	46	20	14	1	0	1
Wayne	18	227	8	7	1	0	0	0	0	0
Weakley	152	3,232	34	26	6	1	0	1	0	0
White	99	1,574	25	19	3	2	1	0	0	0
Williamson	6,233	326,244	535	352	81	59	27	7	4	5
Wilson	683	19,762	149	105	24	16	3	1	0	0

Note: Data are based on the North American Industry Classification System (NAICS), unlike earlier County Business Patterns data, which were published according to the Standard Industrial Classification (SIC) system. As a result, 2000 data may not be directly comparable to previous years.

1. Number of employees for week including March 12.

a. 0 to 19 employees.      b. 20 to 99 employees.

Source: U.S. Census Bureau, County Business Patterns 2000, Tennessee.

TABLE 7.21 — OTHER SERVICES (EXCEPT PUBLIC ADMINISTRATION) EMPLOYEES AND PAYROLL, AND NUMBER OF ESTABLISHMENTS BY EMPLOYMENT-SIZE CLASS, COUNTIES, 2000

County	Number of employees <sup>1</sup>	Annual payroll (\$1,000)	Number of establishments by employment-size class							
			Total	1 to 4	5 to 9	10 to 19	20 to 49	50 to 99	100 to 249	250 or more
Anderson	1,301	19,687	243	160	51	21	9	2	0	0
Bedford	441	7,680	78	64	8	4	1	0	1	0
Benton	128	1,953	39	29	8	2	0	0	0	0
Bledsoe	25	330	11	9	2	0	0	0	0	0
Blount	1,594	24,613	271	169	55	32	14	1	0	0
Bradley	2,903	55,720	213	107	47	37	11	5	5	1
Campbell	291	5,908	73	55	12	4	1	1	0	0
Cannon	66	1,186	23	17	5	1	0	0	0	0
Carroll	252	3,021	69	50	13	5	1	0	0	0
Carter	465	7,097	138	102	29	6	1	0	0	0
Cheatham	181	2,267	48	38	7	2	1	0	0	0
Chester	80	1,030	21	14	7	0	0	0	0	0
Claiborne	111	1,682	41	35	5	1	0	0	0	0
Clay	25	482	11	9	2	0	0	0	0	0
Cocke	223	2,846	66	49	14	3	0	0	0	0
Coffee	1,054	19,153	137	95	21	13	6	1	0	1
Crockett	150	2,003	48	39	7	1	1	0	0	0
Cumberland	727	10,256	110	84	20	3	1	1	0	1
Davidson	21,462	488,698	1,977	1,102	426	225	145	51	24	4
Decatur	103	1,650	22	16	5	0	1	0	0	0
DeKalb	106	1,761	39	34	4	1	0	0	0	0
Dickson	440	8,173	88	55	23	7	3	0	0	0
Dyer	472	6,471	106	73	20	10	3	0	0	0
Fayette	184	2,566	48	33	10	5	0	0	0	0
Fentress	63	958	28	26	1	1	0	0	0	0
Franklin	365	4,261	82	56	16	8	2	0	0	0
Gibson	645	8,675	148	110	26	6	5	1	0	0
Giles	250	3,315	65	52	8	2	3	0	0	0
Grainger	93	1,407	37	31	5	1	0	0	0	0
Greene	743	9,506	138	98	24	10	3	2	1	0
Grundy	38	469	17	15	2	0	0	0	0	0
Hamblen	939	14,153	163	102	36	16	6	3	0	0
Hamilton	9,685	173,265	1,042	565	233	144	67	22	10	1
Hancock	11	257	5	4	1	0	0	0	0	0
Hardeman	213	2,258	59	45	11	2	1	0	0	0
Hardin	269	3,231	61	37	18	6	0	0	0	0
Hawkins	314	3,894	91	68	18	4	1	0	0	0
Haywood	200	2,418	51	42	3	5	1	0	0	0
Henderson	226	3,404	54	42	9	2	1	0	0	0
Henry	474	6,130	88	63	16	7	1	0	1	0
Hickman	156	2,404	29	16	9	3	1	0	0	0
Houston	23	265	9	7	2	0	0	0	0	0
Humphreys	113	1,629	37	27	9	1	0	0	0	0
Jackson	25	357	9	8	0	1	0	0	0	0
Jefferson	357	4,298	88	67	14	5	2	0	0	0
Johnson	64	792	36	33	3	0	0	0	0	0
Knox	10,117	164,091	1,194	722	231	126	87	19	7	2
Lake	33	220	16	15	1	0	0	0	0	0
Lauderdale	223	3,224	52	36	10	5	1	0	0	0
Lawrence	291	3,789	83	62	17	4	0	0	0	0

TABLE 7.21 — OTHER SERVICES (EXCEPT PUBLIC ADMINISTRATION) EMPLOYEES AND PAYROLL, AND NUMBER OF ESTABLISHMENTS BY EMPLOYMENT-SIZE CLASS, COUNTIES, 2000 (Continued)

County	Number of employees <sup>1</sup>	Annual payroll (\$1,000)	Number of establishments by employment-size class							
			Total	1 to 4	5 to 9	10 to 19	20 to 49	50 to 99	100 to 249	250 or more
Lewis	79	1,115	18	12	4	2	0	0	0	0
Lincoln	251	3,576	72	52	14	6	0	0	0	0
Loudon	564	8,920	89	58	18	8	4	0	1	0
McMinn	556	6,556	122	87	20	12	3	0	0	0
McNairy	207	2,653	55	41	8	6	0	0	0	0
Macon	70	1,240	23	18	5	0	0	0	0	0
Madison	2,509	36,926	297	154	73	40	24	4	2	0
Marion	183	2,814	41	29	7	4	1	0	0	0
Marshall	261	3,626	61	39	15	5	2	0	0	0
Maury	1,287	20,987	179	115	31	17	13	2	1	0
Meigs	35	309	13	11	2	0	0	0	0	0
Monroe	258	3,599	76	60	12	3	1	0	0	0
Montgomery	1,754	24,027	258	154	59	27	16	1	1	0
Moore	10	67	4	3	1	0	0	0	0	0
Morgan	45	665	20	18	2	0	0	0	0	0
Obion	460	5,384	96	68	16	8	3	1	0	0
Overton	114	1,627	34	26	5	3	0	0	0	0
Perry	22	320	10	8	2	0	0	0	0	0
Pickett	10	139	9	9	0	0	0	0	0	0
Polk	101	973	42	36	5	1	0	0	0	0
Putnam	1,052	13,240	175	120	32	7	14	2	0	0
Rhea	288	4,167	55	33	15	4	3	0	0	0
Roane	407	5,967	91	62	18	8	3	0	0	0
Robertson	562	6,818	119	93	17	4	4	0	1	0
Rutherford	3,152	54,198	371	225	84	40	16	3	2	1
Scott	396	6,570	33	26	5	1	0	0	0	1
Sequatchie	46	577	18	14	4	0	0	0	0	0
Sevier	1,180	17,958	220	141	49	21	7	2	0	0
Shelby	24,530	485,881	2,223	1,114	495	346	178	62	23	5
Smith	98	1,432	35	30	4	1	0	0	0	0
Stewart	35	602	14	12	1	1	0	0	0	0
Sullivan	3,119	51,319	464	292	95	47	20	7	3	0
Sumner	1,940	27,588	272	164	57	30	17	3	1	0
Tipton	417	5,743	94	60	26	6	2	0	0	0
Trousdale	24	421	9	7	2	0	0	0	0	0
Unicoi	235	3,291	53	32	17	4	0	0	0	0
Union	50	864	14	10	3	1	0	0	0	0
Van Buren	7	42	5	5	0	0	0	0	0	0
Warren	337	4,715	84	60	16	8	0	0	0	0
Washington	2,107	34,401	353	225	73	39	10	4	2	0
Wayne	76	900	26	20	5	1	0	0	0	0
Weakley	419	6,992	96	76	12	3	5	0	0	0
White	98	1,356	39	32	7	0	0	0	0	0
Williamson	3,795	67,675	354	195	70	45	32	7	3	2
Wilson	1,189	17,445	205	136	41	18	7	2	1	0

Note: Data are based on the North American Industry Classification System (NAICS), unlike earlier County Business Patterns data, which were published according to the Standard Industrial Classification (SIC) system. As a result, 2000 data may not be directly comparable to previous years.

1. Number of employees for week including March 12.

Source: U.S. Census Bureau, County Business Patterns 2000, Tennessee.

TABLE 7.22 — RETAIL TRADE DATA, SOUTHEASTERN STATES, 1997 [Dollar amounts in thousands]

State	Number of establishments	Sales	Annual payroll	Number of employees <sup>1</sup>
TENNESSEE	24,808	\$50,813,221	\$4,810,252	304,452
Alabama	20,163	36,623,327	3,381,730	231,665
Arkansas	12,600	21,643,695	1,904,412	132,335
Florida	66,643	151,191,241	14,169,511	841,814
Georgia	33,073	72,212,484	6,943,559	420,676
Kentucky	17,369	33,332,675	3,128,099	212,189
Louisiana	17,863	35,807,894	3,307,929	224,412
Mississippi	12,791	20,774,508	1,935,338	138,372
North Carolina	35,563	72,356,763	6,697,393	416,287
South Carolina	18,481	33,634,264	3,107,153	209,256
Virginia	29,032	62,569,924	6,202,575	379,039
West Virginia	8,082	14,057,933	1,309,316	90,087

Note: 1997 data are based on the North American Industry Classification System (NAICS), unlike earlier censuses, which were published according to the Standard Industrial Classification (SIC) system. As a result, 1997 data may not be directly comparable to previous years. All dollar values are expressed as current dollars; i.e., 1997 dollars. Includes only establishments with payroll.

1. Survey taken during week of March 12.

Source: U.S. Census Bureau, 1997 Economic Census, Retail Trade.

TABLE 7.23 — WHOLESALE TRADE DATA, SOUTHEASTERN STATES, 1997 [Dollar amounts in millions]

State	Number of establishments	Sales	Operating expenses	Annual payroll	Number of employees <sup>1</sup>	End-of-year inventories	
						1996	1997
TENNESSEE	8,234	\$82,626.4	\$8,044.6	\$3,975.4	120,228	\$6,442.1	\$6,729.7
Alabama	6,315	40,986.3	4,844.9	2,394.7	79,229	3,114.9	3,307.9
Arkansas	3,619	27,515.4	2,271.9	1,136.6	41,385	1,520.3	1,554.0
Florida	31,214	187,079.9	20,378.7	9,678.2	296,139	11,591.6	12,492.8
Georgia	13,978	163,782.6	15,252.1	7,519.7	191,087	8,366.0	8,723.1
Kentucky	5,051	37,242.9	4,190.9	2,071.2	69,309	2,662.4	2,927.1
Louisiana	6,390	46,972.3	4,827.7	2,375.2	76,350	2,754.8	2,943.9
Mississippi	3,173	18,445.2	2,143.3	1,012.1	36,520	1,321.2	1,426.7
North Carolina	12,284	98,080.1	11,039.1	5,574.1	157,774	6,368.2	6,770.5
South Carolina	5,035	34,179.8	3,763.1	1,866.8	58,910	2,107.5	2,182.5
Virginia	7,868	61,046.7	7,276.7	3,784.4	106,365	3,619.5	3,931.6
West Virginia	1,956	10,290.4	1,396.6	681.1	23,805	1,068.7	1,143.9

Note: 1997 data are based on the North American Industry Classification System (NAICS), unlike earlier censuses, which were published according to the Standard Industrial Classification (SIC) system. As a result, 1997 data may not be directly comparable to previous years. All dollar values are expressed as current dollars; i.e., 1997 dollars.

1. Survey taken during week of March 12.

Source: U.S. Census Bureau, 1997 Economic Census, Wholesale Trade.

TABLE 7.24 — ACCOMMODATION AND FOOD SERVICE INDUSTRIES DATA, SOUTHEASTERN STATES, 1997 [Dollar amounts in thousands]

State	Number of establishments	Sales	Annual payroll	Number of employees <sup>1</sup>
TENNESSEE	9,604	\$6,790,159	\$1,880,279	197,881
Alabama	6,955	3,881,782	1,059,642	134,719
Arkansas	4,663	2,179,696	589,917	73,397
Florida	28,999	24,165,336	6,239,469	608,834
Georgia	13,829	9,689,927	2,695,138	274,322
Kentucky	6,546	4,056,107	1,140,617	129,442
Louisiana	7,151	5,259,921	1,408,910	147,016
Mississippi	4,050	3,064,753	814,454	84,834
North Carolina	14,579	8,624,993	2,393,158	262,848
South Carolina	7,775	4,835,839	1,313,837	150,621
Virginia	12,343	8,281,218	2,320,695	233,639
West Virginia	3,290	1,633,164	462,334	51,529

Note: Based on the North American Industry Classification System (NAICS), unlike earlier censuses, which were published according to the Standard Industrial Classification (SIC) system. All dollar values are expressed as current dollars; i.e., 1997 dollars. Includes only establishments with payroll.

1. Survey taken during week of March 12.

Source: U.S. Census Bureau, 1997 Economic Census.

TABLE 7.25 — ADMINISTRATIVE AND SUPPORT AND WASTE MANAGEMENT AND REMEDIATION SERVICE INDUSTRIES DATA, SOUTHEASTERN STATES, 1997 [Dollar amounts in thousands]

State	Number of establishments	Receipts/revenue	Annual payroll	Number of employees <sup>1</sup>
TENNESSEE	5,049	\$5,360,302	\$2,560,283	145,824
Alabama	3,200	2,664,759	1,341,688	90,162
Arkansas	1,833	1,353,167	703,891	51,559
Florida	21,046	20,147,650	10,225,346	574,246
Georgia	7,796	9,839,387	4,887,976	273,178
Kentucky	2,848	2,147,364	941,688	74,123
Louisiana	3,635	3,326,284	1,423,086	95,550
Mississippi	1,680	1,268,231	591,038	38,652
North Carolina	7,111	6,568,181	3,054,572	187,947
South Carolina	3,299	3,431,975	1,836,738	115,146
Virginia	7,208	7,000,814	3,261,528	182,038
West Virginia	1,234	796,429	355,224	21,445

Note: Based on the North American Industry Classification System (NAICS), unlike earlier censuses, which were published according to the Standard Industrial Classification (SIC) system. All dollar values are expressed as current dollars; i.e., 1997 dollars. Includes only establishments with payroll.

1. Survey taken during week of March 12.

Source: U.S. Census Bureau, 1997 Economic Census.

TABLE 7.26 — ARTS, ENTERTAINMENT, AND RECREATION INDUSTRIES DATA, SOUTHEASTERN STATES, 1997 [Dollar amounts in thousands]

State	Number of establishments	Receipts/revenue	Annual payroll	Number of employees <sup>1</sup>
TENNESSEE	1,755	\$1,228,665	\$394,346	18,263
Alabama	791	435,740	104,992	9,381
Arkansas	594	228,733	56,790	5,343
Florida	4,763	7,871,475	1,972,914	103,980
Georgia	1,653	1,533,747	408,877	23,437
Kentucky	906	550,206	126,305	10,580
Louisiana	1,016	1,958,063	412,868	22,828
Mississippi	483	1,394,046	371,740	21,239
North Carolina	2,090	1,632,553	470,538	23,481
South Carolina	1,325	1,107,083	251,941	18,499
Virginia	1,613	1,397,864	392,854	26,624
West Virginia	408	273,339	56,623	4,996

Note: Based on the North American Industry Classification System (NAICS), unlike earlier censuses, which were published according to the Standard Industrial Classification (SIC) system. All dollar values are expressed as current dollars; i.e., 1997 dollars. Includes only establishments with payroll.

1. Survey taken during week of March 12.

Source: U.S. Census Bureau, 1997 Economic Census.

TABLE 7.27 — EDUCATIONAL SERVICE INDUSTRIES DATA, SOUTHEASTERN STATES, 1997 [Dollar amounts in thousands]

State	Number of establishments	Receipts/revenue	Annual payroll	Number of employees <sup>1</sup>
TENNESSEE	503	\$145,930	\$54,785	3,079
Alabama	325	101,655	43,447	2,328
Arkansas	198	36,407	12,911	831
Florida	2,248	1,058,027	321,540	15,730
Georgia	920	413,395	129,930	5,755
Kentucky	352	109,555	26,939	1,828
Louisiana	421	130,733	41,882	2,938
Mississippi	154	30,486	8,852	647
North Carolina	863	337,040	103,744	6,313
South Carolina	371	84,426	26,792	1,998
Virginia	1,043	442,911	157,316	7,198
West Virginia	100	24,050	9,091	562

Note: Based on the North American Industry Classification System (NAICS), unlike earlier censuses, which were published according to the Standard Industrial Classification (SIC) system. All dollar values are expressed as current dollars; i.e., 1997 dollars. Includes only establishments with payroll.

1. Survey taken during week of March 12.

Source: U.S. Census Bureau, 1997 Economic Census.

TABLE 7.28 — HEALTH CARE AND SOCIAL ASSISTANCE INDUSTRIES DATA, SOUTHEASTERN STATES, 1997 [Dollar amounts in thousands]

State	Number of establishments	Receipts/revenue	Annual payroll	Number of employees <sup>1</sup>
TENNESSEE	10,113	\$10,753,015	\$4,659,937	155,667
Alabama	7,121	7,116,713	3,104,817	104,492
Arkansas	4,571	3,655,103	1,609,735	59,960
Florida	35,568	32,559,076	13,610,691	447,117
Georgia	13,960	12,065,068	5,158,002	173,768
Kentucky	6,805	5,936,247	2,620,311	94,720
Louisiana	8,580	7,967,636	3,341,538	129,773
Mississippi	4,139	3,632,294	1,547,004	55,529
North Carolina	12,582	10,708,753	4,859,637	173,770
South Carolina	6,261	5,318,481	2,361,279	78,888
Virginia	12,014	9,859,605	4,417,948	150,797
West Virginia	3,266	2,575,022	1,056,948	40,085

Note: Based on the North American Industry Classification System (NAICS), unlike earlier censuses, which were published according to the Standard Industrial Classification (SIC) system. All dollar values are expressed as current dollars; i.e., 1997 dollars. Includes only establishments with payroll.

1. Survey taken during week of March 12.

Source: U.S. Census Bureau, 1997 Economic Census.

TABLE 7.29 — INFORMATION INDUSTRIES DATA, SOUTHEASTERN STATES, 1997 [Dollar amounts in thousands]

State	Number of establishments	Receipts	Annual payroll	Number of employees <sup>1</sup>
TENNESSEE	2,101	\$7,949,711	\$1,511,870	45,015
Alabama	1,430	6,477,478	1,320,115	35,476
Arkansas	904	3,326,605	583,942	20,101
Florida	5,883	27,830,217	5,522,364	145,025
Georgia	3,163	18,939,188	4,176,545	100,656
Kentucky	1,261	5,056,056	814,710	29,098
Louisiana	1,285	4,621,663	907,795	27,271
Mississippi	880	2,480,802	466,646	14,259
North Carolina	2,584	11,337,174	2,126,252	60,047
South Carolina	1,099	4,714,547	845,316	25,054
Virginia	2,945	20,400,419	4,347,332	90,346
West Virginia	605	1,773,480	305,783	11,862

Note: Based on the North American Industry Classification System (NAICS), unlike earlier censuses, which were published according to the Standard Industrial Classification (SIC) system. All dollar values are expressed as current dollars; i.e., 1997 dollars. Includes only establishments with payroll.

1. Survey taken during week of March 12.

Source: U.S. Census Bureau, 1997 Economic Census.

TABLE 7.30 — MANAGEMENT OF COMPANIES AND ENTERPRISES DATA, SOUTHEASTERN STATES, 1997 [Dollar amounts in thousands]

State	Number of establishments	Receipts/revenue	Annual payroll	Number of employees <sup>1</sup>
TENNESSEE	1,105	\$1,098,787	\$3,455,391	76,136
Alabama	502	600,162	1,111,174	26,457
Arkansas	359	348,171	747,488	17,753
Florida	2,208	2,079,909	4,587,441	99,984
Georgia	1,512	2,343,215	4,917,464	92,481
Kentucky	772	1,648,582	1,441,126	28,398
Louisiana	584	1,121,179	819,298	15,971
Mississippi	282	147,495	384,962	10,272
North Carolina	1,146	6,324,832	4,164,937	70,560
South Carolina	474	285,338	1,141,835	23,338
Virginia	1,228	1,644,902	2,844,412	53,902
West Virginia	216	141,988	226,317	4,720

Note: Based on the North American Industry Classification System (NAICS), unlike earlier censuses, which were published according to the Standard Industrial Classification (SIC) system. All dollar values are expressed as current dollars; i.e., 1997 dollars. Includes only establishments with payroll.

1. Survey taken during week of March 12.

Source: U.S. Census Bureau, 1997 Economic Census.

TABLE 7.31 — PROFESSIONAL, SCIENTIFIC AND TECHNICAL SERVICE INDUSTRIES DATA, SOUTHEASTERN STATES, 1997 [Dollar amounts in thousands]

State	Number of establishments	Receipts/revenue	Annual payroll	Number of employees <sup>1</sup>
TENNESSEE	8,812	\$6,911,779	\$2,686,615	72,225
Alabama	7,076	5,295,638	2,051,384	54,413
Arkansas	4,125	1,825,804	719,585	23,094
Florida	42,403	27,231,143	10,803,522	276,263
Georgia	17,810	15,266,425	5,908,775	138,198
Kentucky	6,189	3,820,337	1,260,117	41,991
Louisiana	9,077	5,754,632	2,158,962	63,642
Mississippi	3,627	1,761,573	662,104	21,671
North Carolina	14,351	9,760,903	3,693,462	101,610
South Carolina	6,576	6,820,930	1,850,524	47,679
Virginia	17,539	24,151,691	9,729,762	212,632
West Virginia	2,517	1,166,855	395,183	15,714

Note: Based on the North American Industry Classification System (NAICS), unlike earlier censuses, which were published according to the Standard Industrial Classification (SIC) system. All dollar values are expressed as current dollars; i.e., 1997 dollars. Includes only establishments with payroll.

1. Survey taken during week of March 12.

Source: U.S. Census Bureau, 1997 Economic Census.



TABLE 7.32 — OTHER SERVICE INDUSTRIES DATA (EXCEPT PUBLIC ADMINISTRATION)  
SOUTHEASTERN STATES, 1997 [Dollar amounts in thousands]

State	Number of establishments	Receipts/revenue	Annual payroll	Number of employees <sup>1</sup>
TENNESSEE	7,767	\$2,996,672	\$918,666	49,204
Alabama	6,329	2,241,711	659,334	37,061
Arkansas	3,553	1,113,900	310,500	18,809
Florida	26,121	9,123,604	2,665,728	146,360
Georgia	11,482	4,580,693	1,407,547	69,422
Kentucky	5,383	1,870,271	551,393	31,164
Louisiana	5,998	2,595,162	767,234	39,764
Mississippi	3,491	1,057,115	299,648	17,449
North Carolina	11,483	4,060,637	1,203,995	64,802
South Carolina	5,672	1,900,952	563,825	32,166
Virginia	11,301	4,397,192	1,360,301	68,807
West Virginia	2,512	867,421	255,946	14,805

Note: Based on the North American Industry Classification System (NAICS), unlike earlier censuses, which were published according to the Standard Industrial Classification (SIC) system. All dollar values are expressed as current dollars; i.e., 1997 dollars. Includes only establishments with payroll.

1. Survey taken during week of March 12.

Source: U.S. Census Bureau, 1997 Economic Census.

TABLE 7.33 — NEW BUSINESS INCORPORATIONS, SOUTHEASTERN STATES AND UNITED STATES, 1990—1997

State	1997	1996	1995	1994	1993	1992	1991	1990
TENNESSEE	7,495	7,785	8,194	10,073	8,859	8,514	8,306	8,290
Alabama	7,742	7,686	7,686	7,169	7,179	7,087	6,116	6,092
Arkansas	6,994 <sup>e</sup>	6,010	6,298 <sup>r</sup>	5,867	5,410	6,078	5,326	6,111
Florida	108,268	104,113	98,066	93,388	88,048	86,037	81,083	82,172
Georgia	29,321	26,902	26,990	24,707	23,084	21,046	18,098	18,891
Kentucky	8,397	8,060	7,764	7,688	7,758	7,155	6,782	6,669
Louisiana	11,152	11,531	11,082	11,328	10,656	10,839	8,973	8,974
Mississippi	4,910	5,288	4,680 <sup>r</sup>	4,814	4,388	3,758	3,602	3,405
North Carolina	19,078	17,861	16,021	14,830	13,424	12,580	11,944	12,376
South Carolina	8,149 <sup>e</sup>	8,049 <sup>e</sup>	7,601	7,374	6,483	6,189	5,700	7,158
Virginia	18,704	19,047	19,172	19,150	17,212	16,936	16,883	17,376
West Virginia	2,069 <sup>e</sup>	2,380 <sup>e</sup>	2,535 <sup>e</sup>	2,327	2,406	2,236	2,219	2,542
UNITED STATES	798,917 <sup>e</sup>	786,482 <sup>e,r</sup>	768,180 <sup>e,r</sup>	741,657	706,537	666,800	628,604	647,366

Note: Includes domestic for-profit-incorporations only. Data for 1993 and 1994 are preliminary.

e includes some or all estimated monthly data.

r revised.

Source: Dun & Bradstreet Corporation, Murray Hill, New Jersey, New Business Incorporations (copyright), monthly; and Dun & Bradstreet Corporation, Economic Analysis Department, various news releases.

TABLE 7.34 — BUSINESS FAILURES, SOUTHEASTERN STATES AND UNITED STATES, 1990—1997

State	1997	1996	1995	1994	1993	1992	1991	1990
TENNESSEE	1,717	1,331	991	957	1,210	1,660	1,995	1,475
Alabama	635	542	547	669	839	901	1,027	678
Arkansas	1,117	1,005	737	365	186	511	480	266
Florida	2,583	2,676	2,904	3,605	5,091	5,375	5,229	3,665
Georgia	1,181	1,306	1,481	1,958	2,355	2,877	3,390	1,944
Kentucky	568	642	659	706	845	1,091	1,234	1,063
Louisiana	300	272	456	657	668	858	1,103	1,152
Mississippi	147	183	232	253	323	496	523	453
North Carolina	1,031	1,038	962	1,051	1,194	1,502	1,351	1,026
South Carolina	413	372	490	499	397	483	603	415
Virginia	877	1,058	1,713	1,455	1,741	2,174	2,297	1,597
West Virginia	319	300	287	297	316	403	399	240
UNITED STATES	83,384	71,931	71,128	71,520	86,133	97,069	88,140	60,747

Note: Data for 1997 are preliminary.

Source: Dun & Bradstreet Corporation, Murray Hill, New Jersey, Business Failure Record (copyright), annual.